



## CERTIFICATE



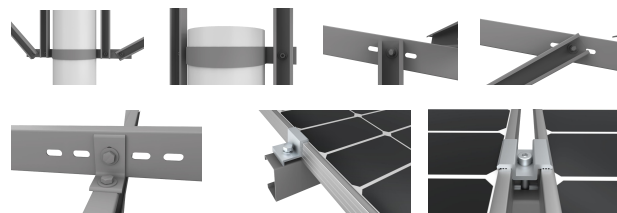
## SPECIFICATION

<b>System Name</b>	MetaGround-Steel-PHC Mounting System
<b>Ground Type</b>	MAC/HDG Steel/AL
<b>Tilt Angle</b>	Up to 60°
<b>Wind Load</b>	Up to 90m/s
<b>Snow Load</b>	Up to 50cm
<b>Applicable Solar Module</b>	Framed/Frameless
<b>Panel Layout</b>	Portrait/Landscape
<b>Design Standard</b>	BS EN, ASCE7-10, BS 6399, AS-NZS 1170, GB 50009-2012, MS 1553, NSCP
<b>Material</b>	MAC/ HDG Steel , AL-6005-T6, SUS304
<b>Color</b>	Sliver/Black
<b>Warranty</b>	10-year

## FEATURE

1. Self-healing. MAC steel could be adopted as the main material to form a stable and cost-effective design.
2. Save installation time and labor cost. Simple structure and prefabricated PHC Pipe Pile save installation time and labor costs.
3. Against floods. High PHC Pipe Pile against the floods.

## INSTALLATION



## COMPONENT

- |          |  |               |          |  |              |
|----------|--|---------------|----------|--|--------------|
| <b>1</b> |  | Beam          | <b>7</b> |  | Mid Clamp    |
| <b>2</b> |  | Inclined Beam | <b>8</b> |  | Beam Support |
| <b>3</b> |  | Post          |          |  |              |
| <b>4</b> |  | Side Support  |          |  |              |
| <b>5</b> |  | Hoop          |          |  |              |
| <b>6</b> |  | End Clamp     |          |  |              |