

RAISE A GREEN WORLD

 CONTACT US

+86-592-5902515

sales@antaisolar.com

 GLOBAL HEADQUARTERS:

25-27F, Building 1, Winland International Financial Center, No. 1 Jinrong Street,
Xiamen, Fujian, China

ANTAISOLAR



PRODUCT CATALOG

Altra

Altima

We are offering a diverse product portfolio covering full-material, full-function of solar tracking and mounting systems to move towards zero-carbon future and promote sustainable development.



Expert

in Digital Intelligent PV Mounting System Solutions



50.1^{GW}

Global Solar Mounting System Shipments

Global 500

Ranked Renewable Energy Enterprise

800+

Number of Employees

80+ Countries

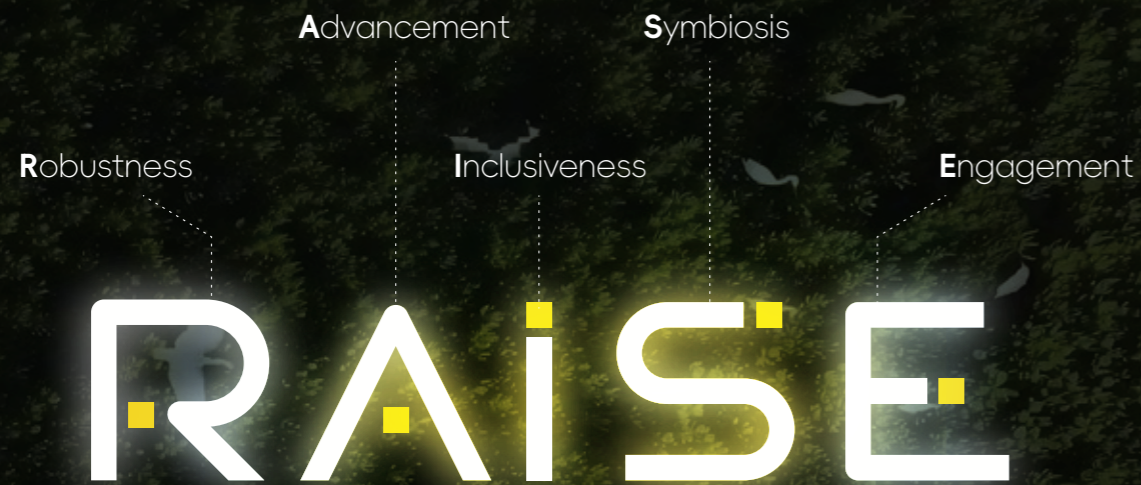
Export Coverage

25 GW

Annual Production Capacity
(Aluminum&Steel)

ESG

Environment, Social, Governance



RAISE ESG strategy

Building on our RAISE ESG strategy framework aligned with industry evolution, Antaisolar marked a milestone in 2023 with the first ESG report issuance.

Centered on the "Raise A Green World" mission, our five strategic pillars – Robustness, Advancement, Inclusiveness, Symbiosis, and Engagement – propel the vision of global clean energy leadership while addressing regulatory imperatives.

EcoRaise



EcoRaise is a global ecological co-creation initiative that unites stakeholders to turn ESG concepts into worldwide sustainable practices

Environmental Protection

Water resource management, waste management, energy management, green processes

Green Energy Development

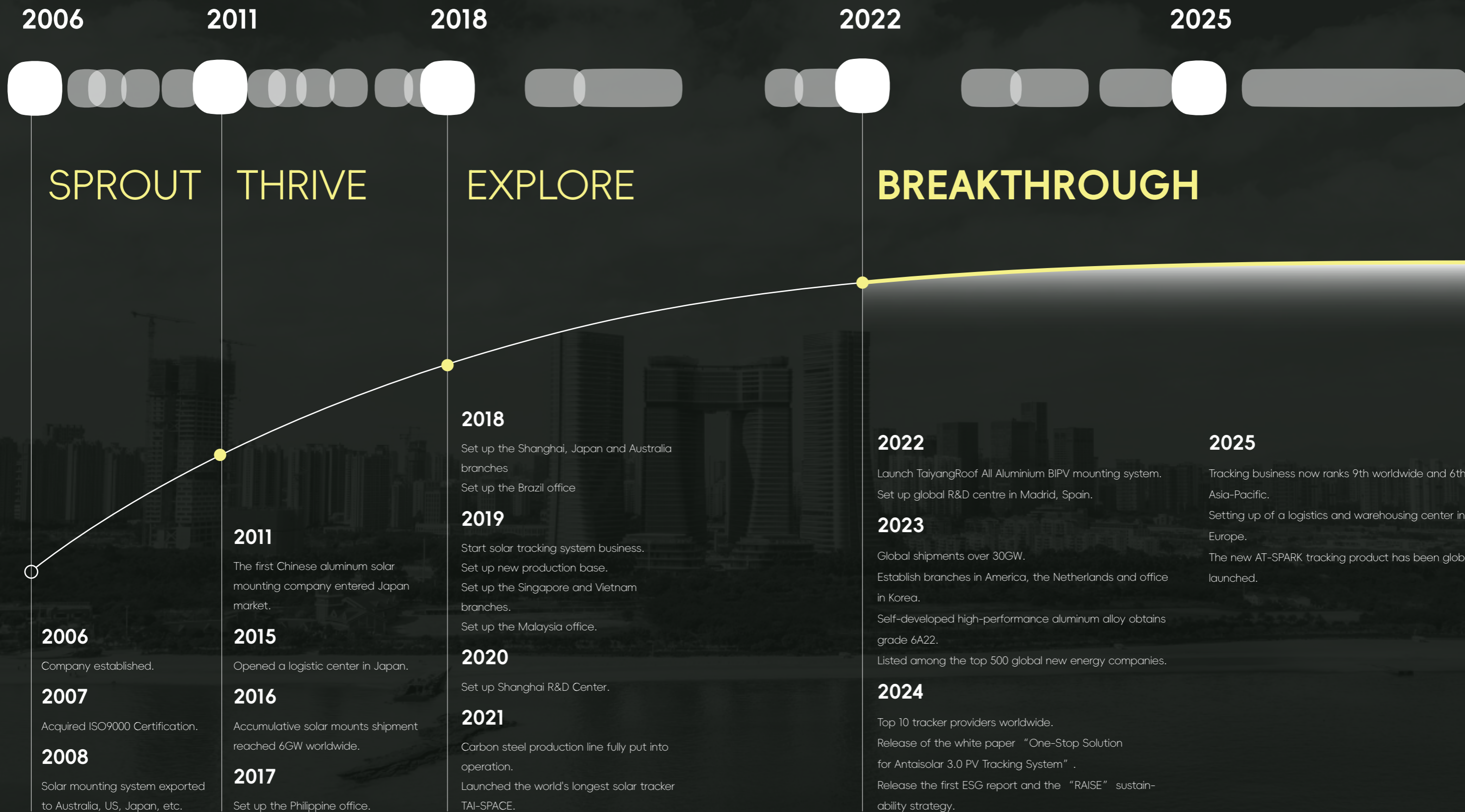
Investing in the construction of clean energy projects, zero-carbon factories

Biodiversity Conservation

Focusing on biodiversity, and jointly carrying out activities with public welfare organizations, such as donations and outdoor practices

Advocating Sustainable Lifestyles

Water resource management, waste management, energy management, green processes



GLOBAL HEADQUARTERS:

Xiamen, China

SUBSIDIARIES / BRANCH OFFICES:

Shanghai, Singapore, Australia, Japan, India, Netherlands, USA, Spain, Hong Kong, Shandong, Brazil, Indonesia

OFFICES:

Vietnam, Malaysia, Philippines, Jordan, Poland, Dubai, Argentina, Chile, Mexico, Korea

R&D CENTERS:

Shanghai, Xiamen, Zhangzhou, Madrid

LOGISTICS CENTERS:

Japan, Australia, Netherlands

DELIVERY CENTERS:

China, Japan, Malaysia, India, Uzbekistan, Spain, Brazil, Colombia

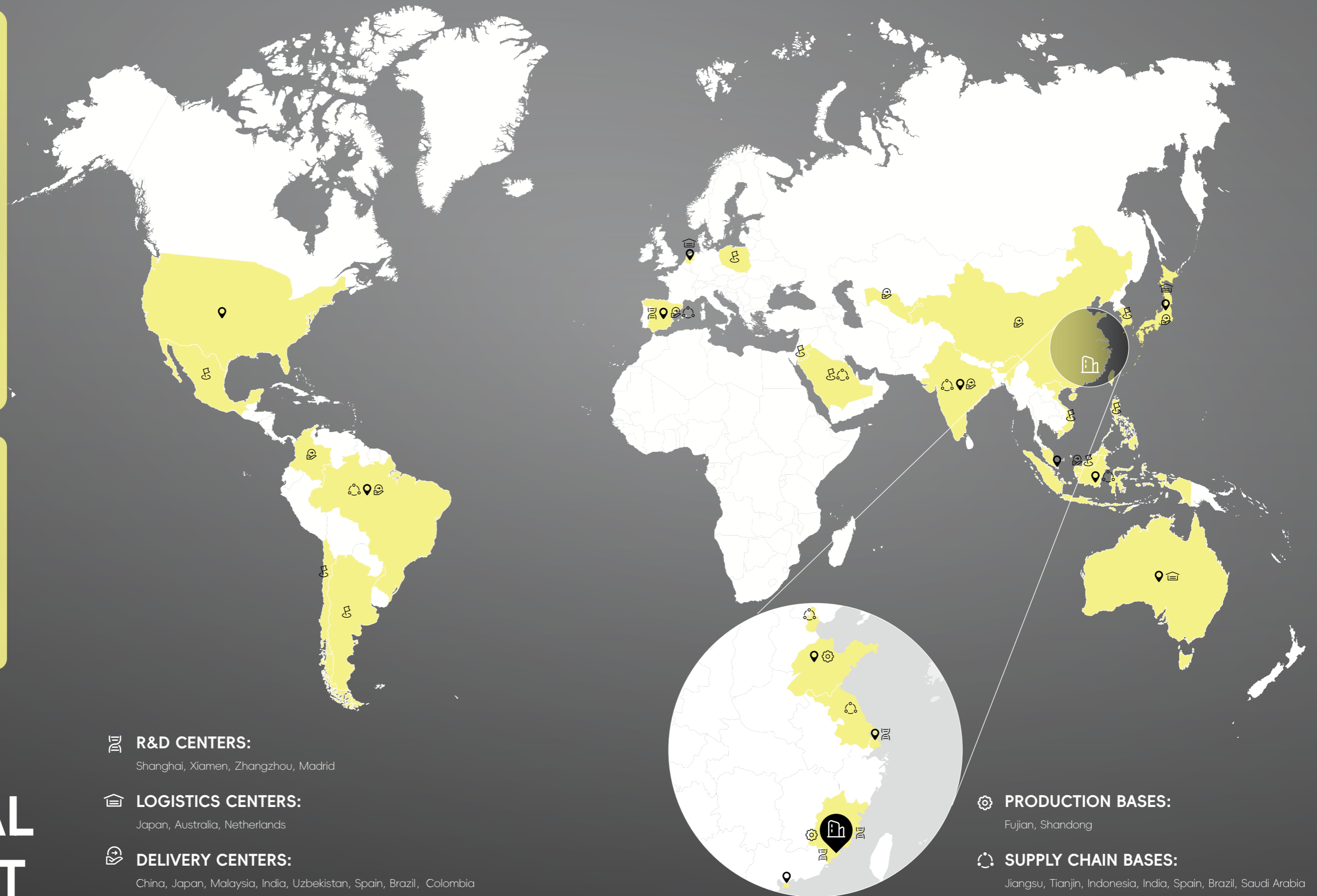
PRODUCTION BASES:

Fujian, Shandong

SUPPLY CHAIN BASES:

Jiangsu, Tianjin, Indonesia, India, Spain, Brazil, Saudi Arabia

GLOBAL LAYOUT



VERTICAL INTEGRATION

Full-chain coverage spanning raw material processing, finished product manufacturing, and solution delivery.

SMART LOGISTICS

Integrated RGV intelligent logistics system for end-to-end intelligent process control.

FULL COVERAGE

Leveraging the intelligent manufacturing capabilities, we provide with a production system that covers all materials and functions.

IN-HOUSE PRODUCTION BASE



A One-take Video of Production Base

210,727^{m²}

Total Construction Area

"Aluminum + Carbon Steel"

Dual-Material Production System

10^{GW}

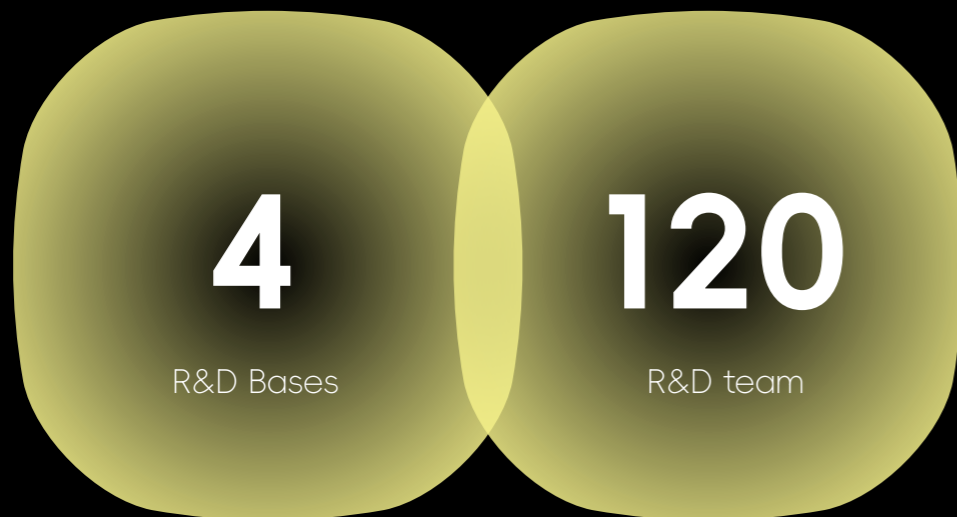
Annual Production Capacity of **Aluminum** Mounting System

15^{GW}

Annual Production Capacity of **Steel** Mounting System

Research & Develop

We understand complex processes and wind engineering calculations, keep researching and developing industrial solutions for metal materials, mechanical calculations, intelligent mechanical control and machine learning algorithms.



Design Standard

- Eurocode 0-9
- GB 50009
- JIS C 8955
- ASCE 7-10
- AS NZS 1170.2

Technical Certification

- CPP
- IEC
- SGS
- TUVNORD
- UL
- gamcorp
- DNV
- CE
- ETN
- MCS CERTIFIED
- ETL Intertek

MATERIAL R&D

	AL6063-T5	AL6005-T5	AL6A22-T6
TENSILE STRENGTH (Mpa)	175	250	300
YIELD STRENGTH (Mpa)	130	200	285
POST-BREAK ELONGATION (%)	7	7	10

MECHANICAL CALCULATION & ANALYSIS

- Wind Engineering and Mechanical Analysis
- Structural Load Analysis
- Sap2000 Modelling Analysis
- Standard Calculations
- Simulation Analysis

MECHANICAL CONTROL & AI ALGORITHM

- 2.4G Zigbee Wireless Networking Technology
- Self-Powered with Battery Backup
- String & Inverter Power Integration
- Machine Learning Algorithms
- Meteorological Disasters Warning

Antaisolar Certification Scope & Accreditations

Design, development, and production of aluminum alloy profiles, solar PV mounting systems (aluminum & carbon steel), module frames, and ground piles, including related QEHS management activities. Certified by CQC, with each QEHS system certificate endorsed by IQNet (29 international members) for global recognition.

Management System Certifications

<p>ISO 50001 2018 Energy Management System Certification</p>	<p>ISO 45001 2018 Occupational Health and Safety Management System Certification</p>
<p>ISO 14001 2015 Environmental Management System Certification</p>	<p>ISO 9001 2015 Quality Management System Certification</p>



Rooftop & Fixed Ground

Aluminum alloy & carbon steel

Tracker

Main structural components

In terms of product quality management, we have established a robust management framework. By defining clear quality policies and quantifiable management objectives, we drive the standardization and digitization of our quality control processes.

IF YOU ARE...

A PROJECT-BASED CLIENT



We provide full-cycle support — from system design to installation and commissioning.

<p>Site Survey</p>	<p>Cross-functional Training</p>
<p>Lower Spend & Ops Costs</p>	<p>MANAGER On-site Project Manager</p>

SUPPORT

Construction & Commissioning Support

<p>LOCAL WAREHOUSE</p>	<p>Optimal Layout Design</p>
------------------------	------------------------------

OPTIMIZED LOGISTICS

A DISTRIBUTOR



we offer flexible inventory solutions competitive pricing, and reliable supply chains to help you grow your local market.

<p>In-depth Training & Support</p>	<p>Ready-to-Install Kit One Order & One Box</p>
<p>Co-Marketing</p>	<p>SUPPORT On-site Project Support</p>

AUTO DESIGN PLATFORM



<p>LOCAL WAREHOUSE</p>	<p>Share Regional Resources</p>
------------------------	---------------------------------

OPTIMIZED LOGISTICS

HOW WE TAILOR SOLUTIONS FOR YOU

Introducing Antaisolar Fixed Mounting Systems.

We pour our passion into building an outstanding solar mounting brand, crafted to provide you with excellent one-stop solar mounting solutions suitable for various scenarios.

Altra

Altra Solar Mounting System Series seamlessly supports rooftop, balcony, and other distributed solar applications.

It delivers intelligent solutions with fast installation, robust durability, and flexible adjustability, aiming to enable the most convenient solar deployment worldwide and accelerate the adoption of green energy across the globe.

Altima

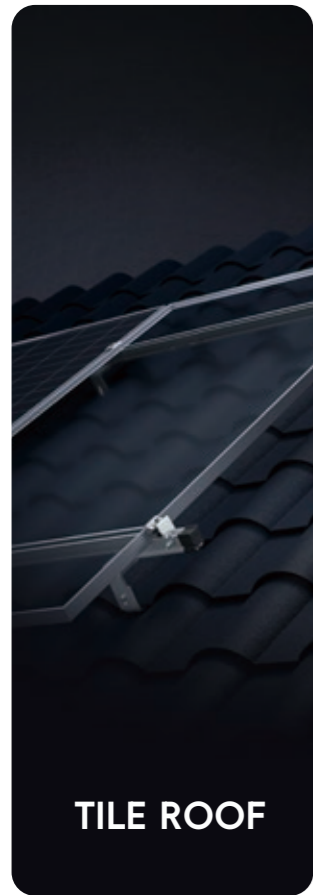
Altima Solar Mounting System Series delivers robustness and durability for diverse environmental conditions.

It offers highly customized ground mounting solutions tailored to the site. With Altima, we ensure you to get the most suitable solution with comprehensive support for successful project execution.

Altima
ROOFTOP

Altima

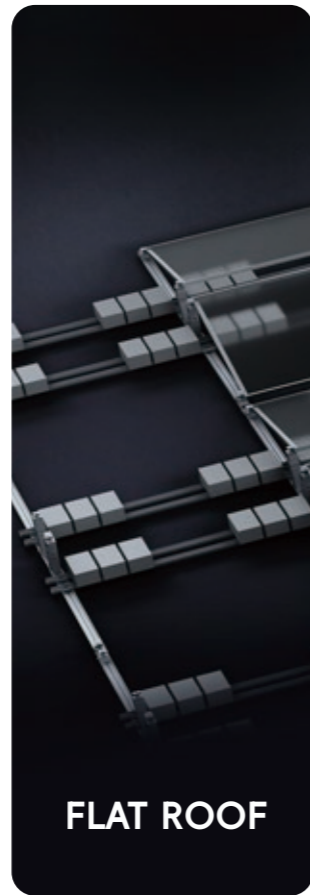
GROUND



18



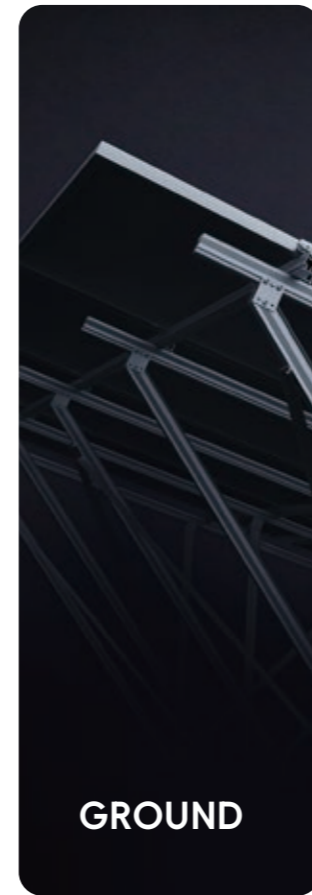
24



30



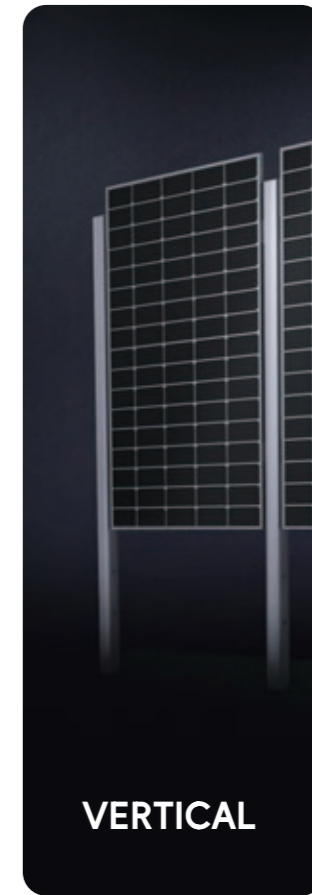
36



38



41



44



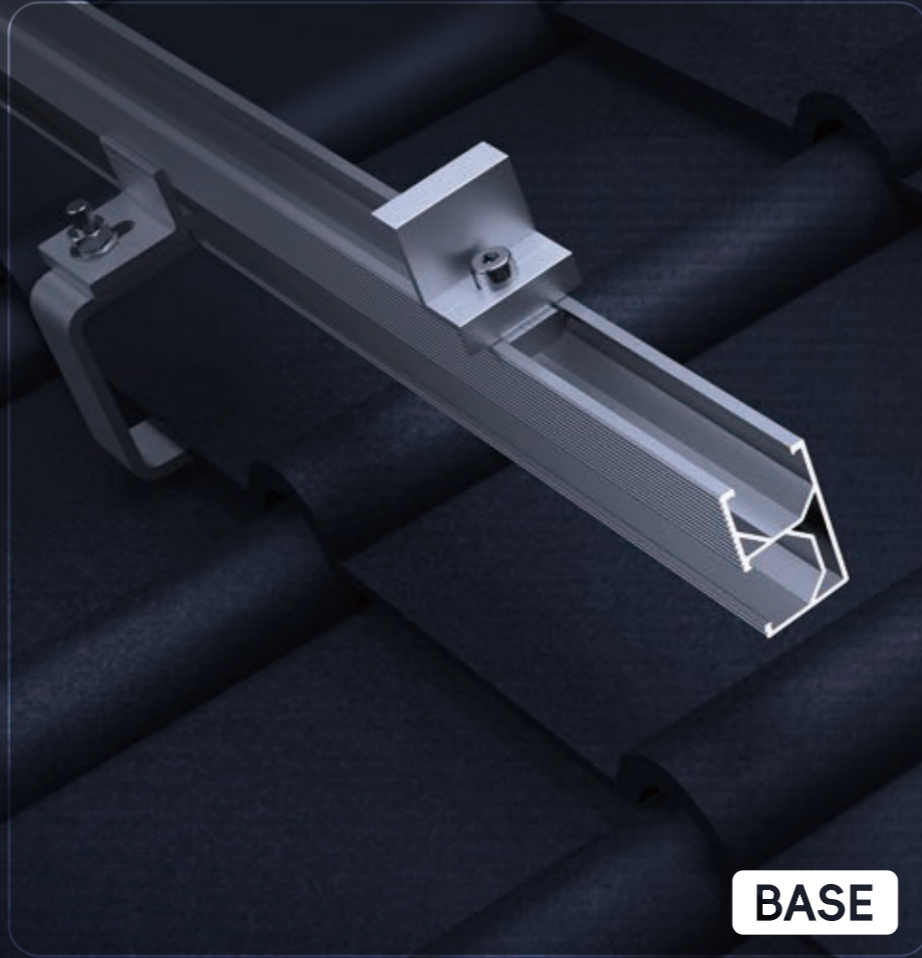
46

Altra

TILE ROOF



PRO



BASE



LITE

ALTRA-TILE **PRO**

ULTIMATE DURABILITY, RAPID DEPLOYMENT.

PRO is designed for maximum durability and installation speed. Features stronger rail for enhanced structural strength and load capacity. Equipped with SnapFit for fast installation.

ALTRA-TILE **BASE**

THE BALANCE OF PERFORMANCE AND COST.

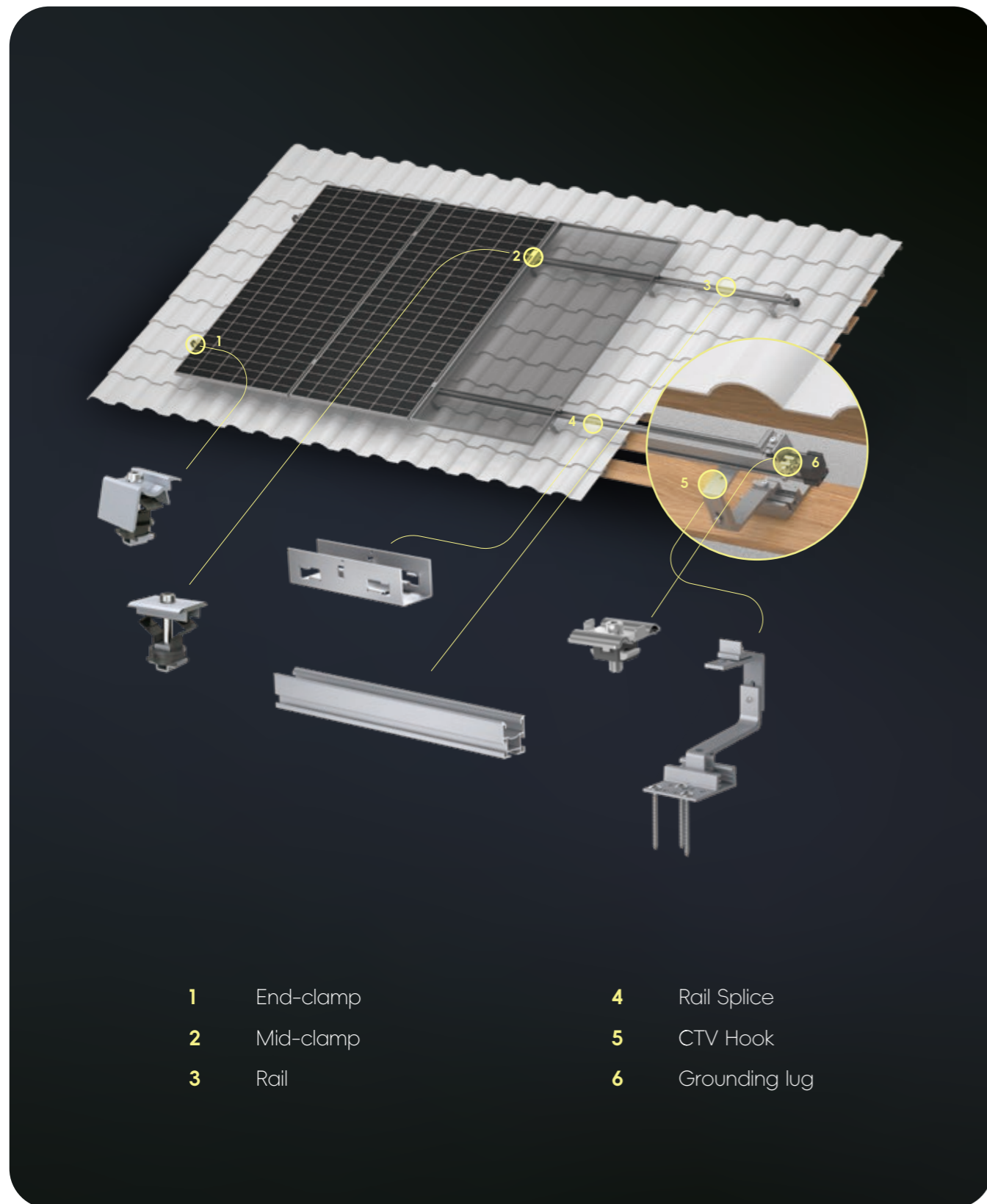
BASE is a well-balanced solution combining stable performance and economic efficiency.

ALTRA-TILE **LITE**

ECONOMICAL CHOICE, UNCOMPROMISED QUALITY.

LITE is for cost-sensitive scenarios with reliable performance. It adopts rail system reducing material usage and overall system weight.

ALTRA-TILE PRO



CURVE TILE ROOF



ALTRA-TILE PRO CTV

MATERIAL Main Structure: AL6005-T6
Roof Hook: AL6005-T6
Fasteners: SUS 304

OPTIONS Color: Silver / Black
Panel Layout: Landscape/Portrait
Roof Angle: 0-45°



ALTRA-TILE PRO CTA

MATERIAL Main Structure: AL6005-T6
Roof Hook: AL6005-T6
Fasteners: SUS 304

OPTIONS Color: Silver / Black
Panel Layout: Landscape/Portrait
Roof Angle: 0-45°



ALTRA-TILE PRO CTN

MATERIAL Main Structure: AL6005-T6
Roof Hook: AL6005-T6
Fasteners: SUS 304

OPTIONS Color: Silver / Black
Panel Layout: Landscape/Portrait
Roof Angle: 0-45°



ALTRA-TILE PRO CTS

MATERIAL Main Structure: AL6005-T6
Roof Hook: SUS 304
Fasteners: SUS 304

OPTIONS Color: Silver / Black
Panel Layout: Landscape/Portrait
Roof Angle: 0-45°

FLAT TILE ROOF SLATE TILE ROOF HANGER BOLT



ALTRA-TILE PRO FTS

MATERIAL Main Structure: AL6005-T6
Roof Hook: SUS 304
Fasteners: SUS 304

OPTIONS Color: Silver / Black
Panel Layout: Landscape/Portrait
Roof Angle: 0-45°



ALTRA-TILE PRO STS

MATERIAL Main Structure: AL6005-T6
Roof Hook: SUS 304
Fasteners: SUS 304

OPTIONS Color: Silver / Black
Panel Layout: Landscape/Portrait
Roof Angle: 0-45°

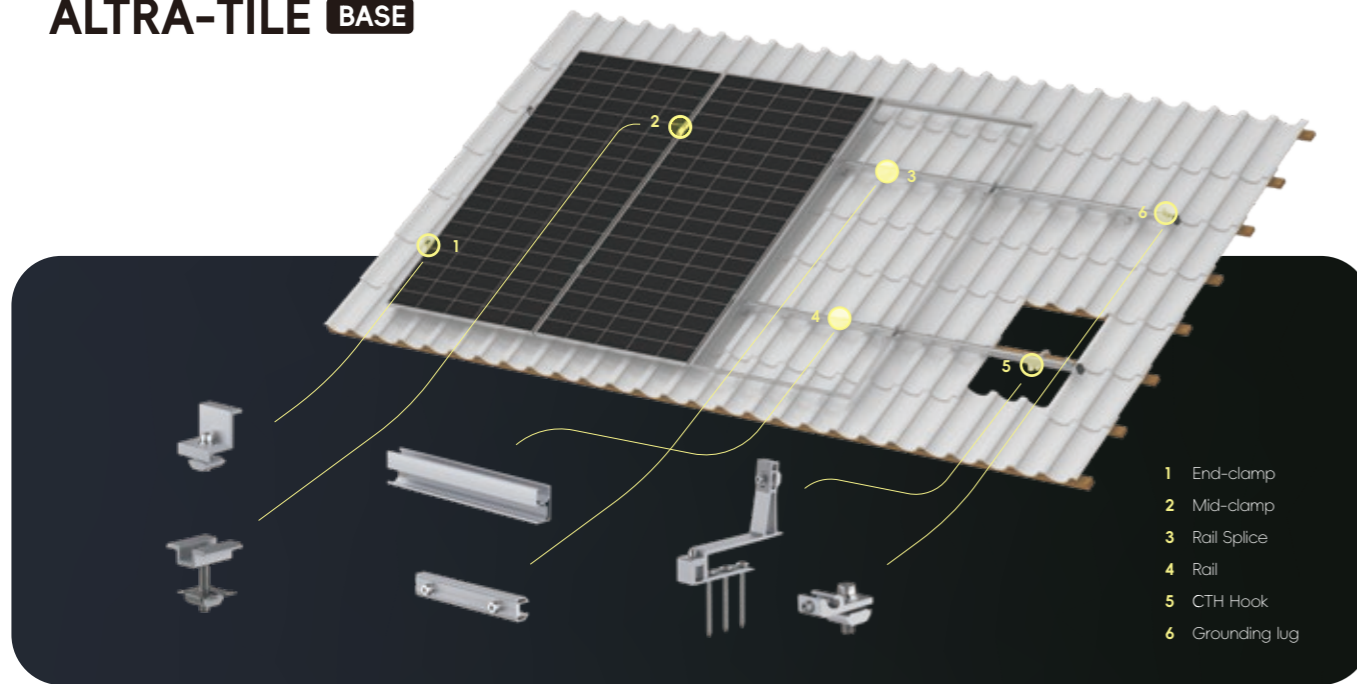


ALTRA-TILE PRO HGB

MATERIAL Main Structure: AL6005-T6
Roof Hook: SUS 304
Fasteners: SUS 304

OPTIONS Color: Silver / Black
Panel Layout: Landscape/Portrait
Roof Angle: 0-45°
Connection: Clamping Block

ALTRA-TILE BASE



CURVE TILE ROOF

ALTRA-TILE BASE CTH



MATERIAL

Main Structure: AL6005-T6
Roof Hook: AL6005-T6
Fasteners: SUS 304

OPTIONS

Color: Silver / Black
Panel Layout: Portrait
Landscape/Portrait
Roof Angle: 0-45°

ALTRA-TILE BASE CTS



MATERIAL

Main Structure: AL6005-T6
Roof Hook: SUS 304
Fasteners: SUS 304

OPTIONS

Color: Silver / Black
Panel Layout: Portrait
Roof Angle: 0-45°

FLAT TILE ROOF

ALTRA-TILE BASE FTS



MATERIAL

Main Structure: AL6005-T6
Roof Hook: SUS 304
Fasteners: SUS 304

OPTIONS

Color: Silver / Black
Panel Layout: Portrait
Roof Angle: 0-45°

HANGER BOLT

ALTRA-TILE BASE HGB



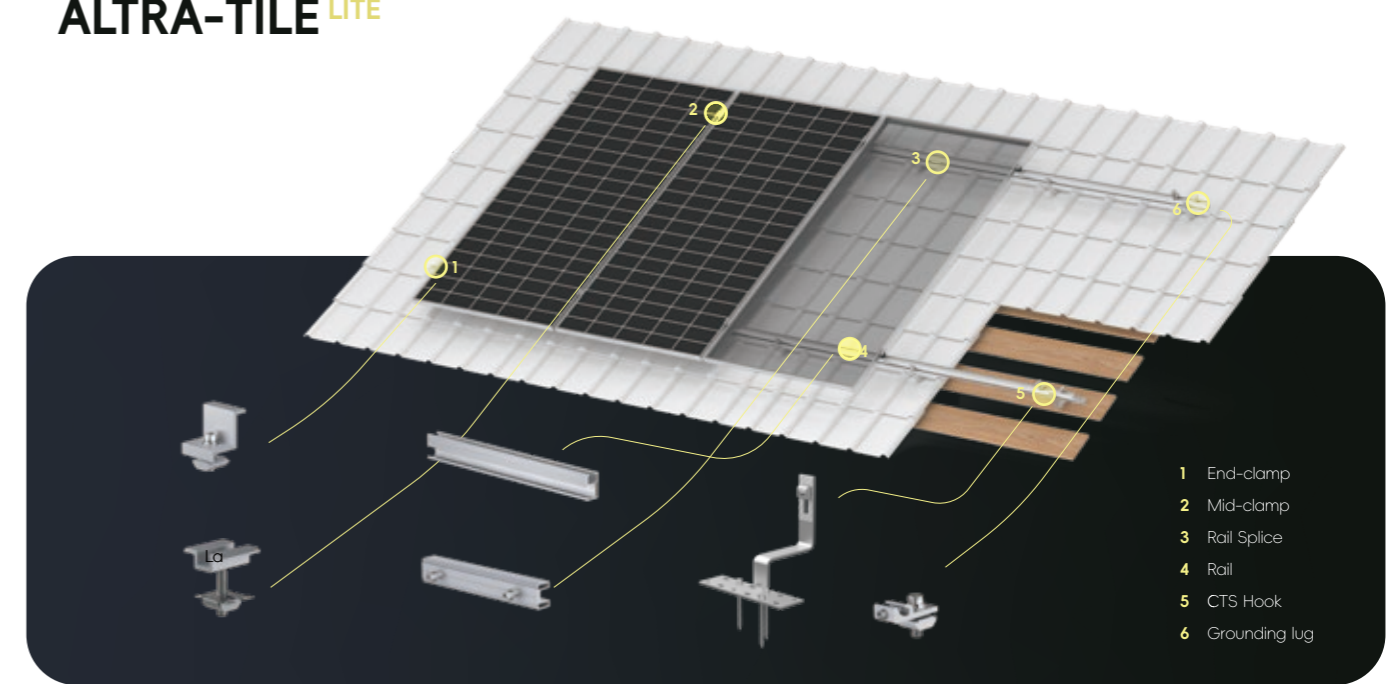
MATERIAL

Main Structure: AL6005-T6
Roof Hook: SUS 304
Fasteners: SUS 304

OPTIONS

Color: Silver / Black
Panel Layout: Portrait
Landscape/Portrait
Roof Angle: 0-45°
Connection: Clamping Block

ALTRA-TILE LITE



CURVE TILE ROOF



ALTRA-TILE LITE CTH

MATERIAL

Main Structure: AL6005-T6
Roof Hook: AL6005-T6
Fasteners: SUS 304

OPTIONS

Color: Silver / Black
Panel Layout: Landscape/Portrait
Roof Angle: 0-45°



ALTRA-TILE LITE CTS

Main Structure: AL6005-T6
Roof Hook: SUS 304
Fasteners: SUS 304

OPTIONS

Color: Silver / Black
Panel Layout: Portrait
Roof Angle: 0-45°

FLAT TILE ROOF



ALTRA-TILE LITE FTS

MATERIAL

Main Structure: AL6005-T6
Roof Hook: SUS 304
Fasteners: SUS 304

OPTIONS

Color: Silver / Black
Panel Layout: Portrait
Roof Angle: 0-45°



ALTRA-TILE LITE STS

Main Structure: AL6005-T6
Roof Hook: SUS 304
Fasteners: SUS 304

OPTIONS

Color: Silver / Black
Panel Layout: Portrait
Roof Angle: 0-45°



ALTRA-TILE LITE HGB

Main Structure: AL6005-T6
Roof Hook: SUS 304
Fasteners: SUS 304

OPTIONS

Color: Silver / Black
Panel Layout: Landscape/Portrait
Roof Angle: 0-45°
Connection: Clamping Block

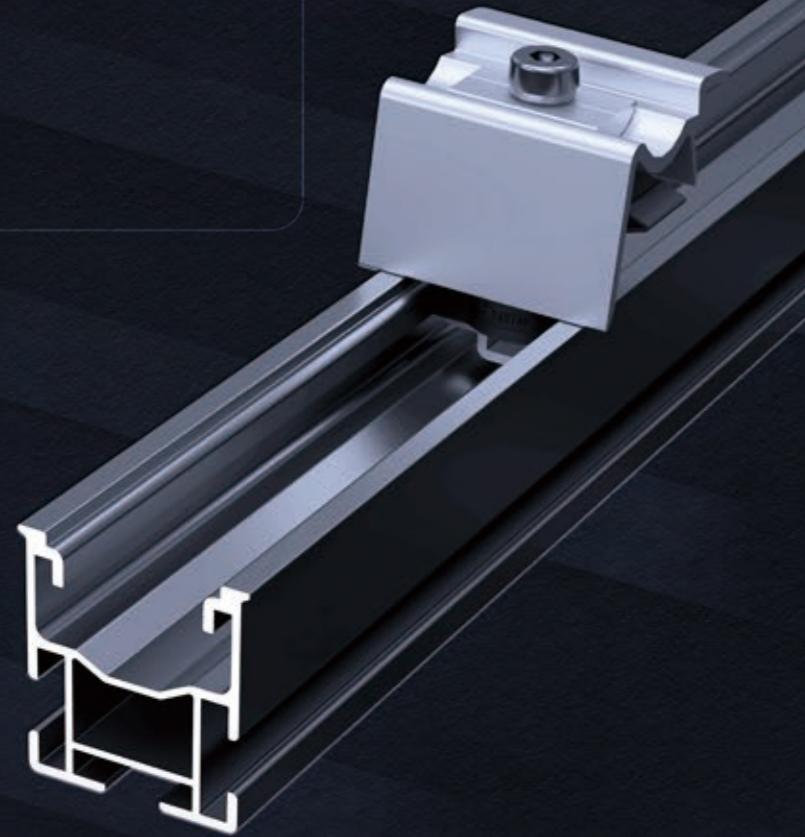
FLAT TILE ROOF

SLATE TILE ROOF

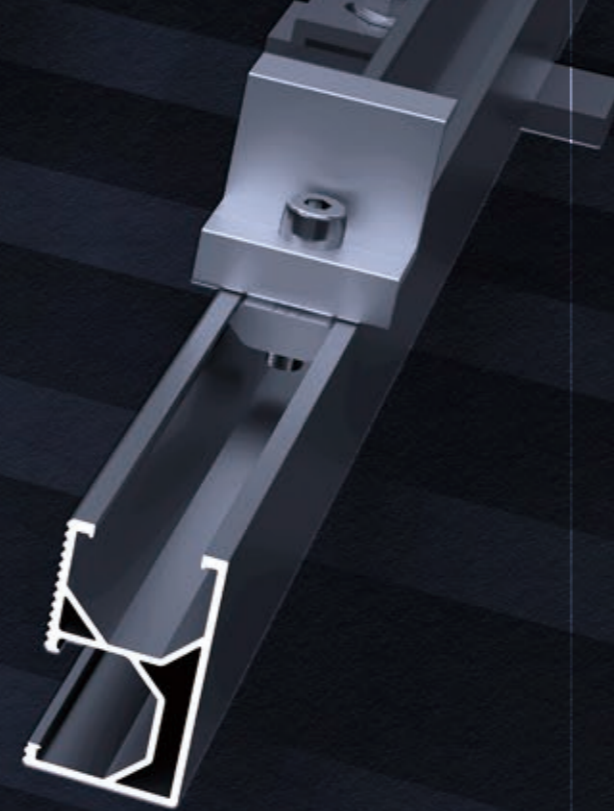
HANGER BOLT

Altra

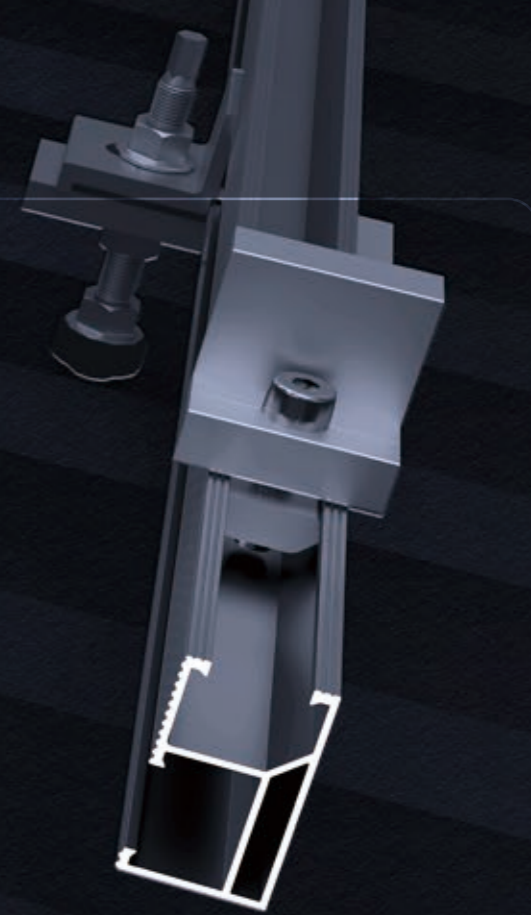
METAL ROOF



PRO



BASE



LITE

ALTRA-TILE **PRO**

ULTIMATE DURABILITY, RAPID DEPLOYMENT.

PRO is designed for maximum durability and installation speed. Features stronger rail for enhanced structural strength and load capacity. Equipped with SnapFit for fast installation.

ALTRA-TILE **BASE**

THE BALANCE OF PERFORMANCE AND COST.

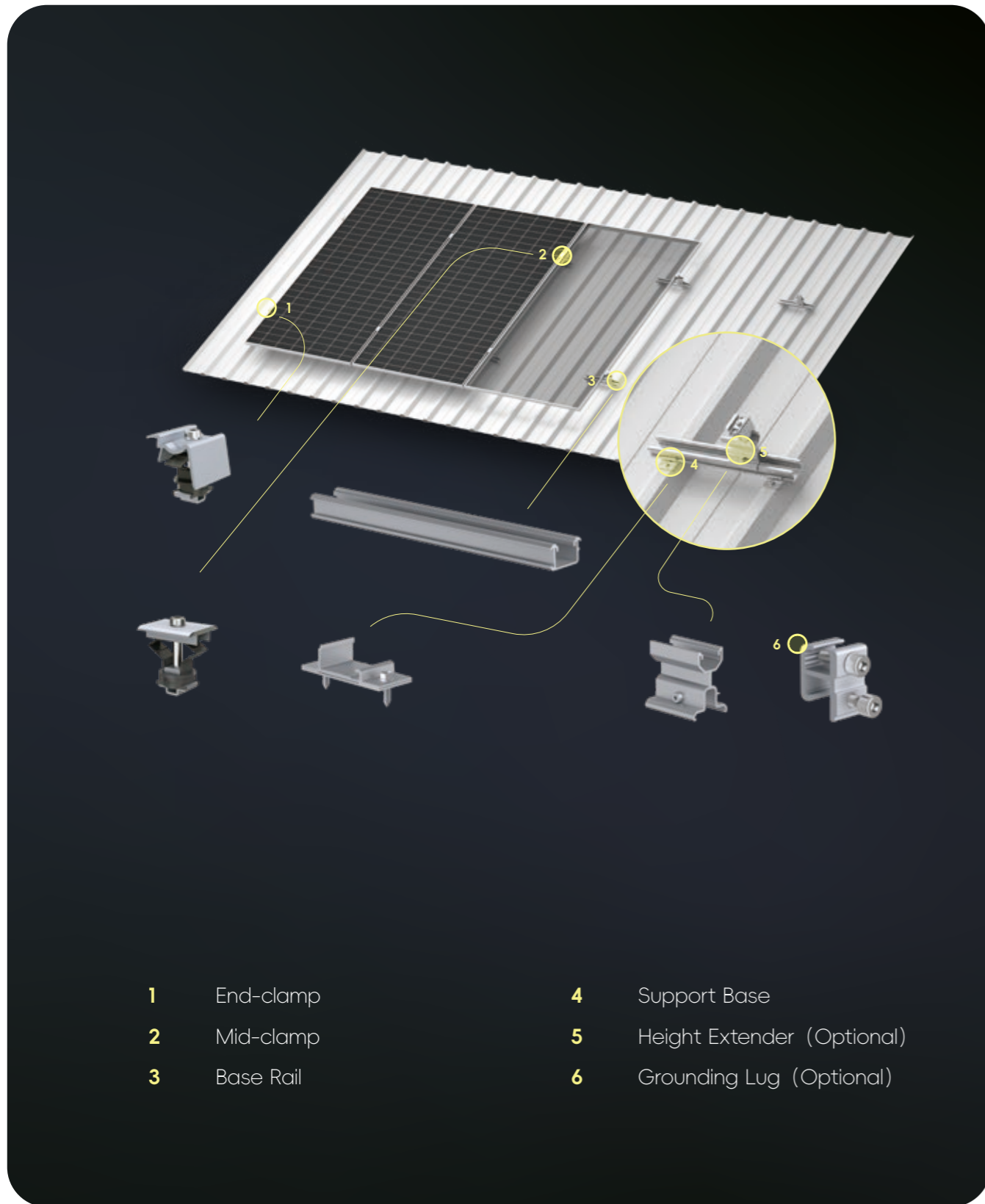
BASE is a well-balanced solution combining stable performance and economic efficiency.

ALTRA-TILE **LITE**

ECONOMICAL CHOICE, UNCOMPROMISED QUALITY.

LITE is for cost-sensitive scenarios with reliable performance. It adopts rail system reducing material usage and overall system weight.

ALTRA-METAL **PRO**



- | | | | |
|----------|-----------|----------|----------------------------|
| 1 | End-clamp | 4 | Support Base |
| 2 | Mid-clamp | 5 | Height Extender (Optional) |
| 3 | Base Rail | 6 | Grounding Lug (Optional) |

TRAPEZOIDAL METAL ROOF

ALTRA-METAL PRO MINIRAIL H32

MATERIAL
 Rail: AL6005-T6
 Fasteners: SUS 304

OPTIONS
 Color: Silver / Black
 Panel Layout: Landscape
 Tilt Angle:0 °



ALTRA-METAL PRO MINIRAIL H45

MATERIAL
 Rail: AL6005-T6
 Fasteners: SUS 304

OPTIONS
 Color: Silver / Black
 Panel Layout: Landscape
 Tilt Angle:0 °



ALTRA-METAL PRO UNIRAIL

MATERIAL
 Rail: AL6005-T6
 Fasteners: SUS 304

OPTIONS
 Color: Silver / Black
 Panel Layout: Landscape/Portrait
 Tilt Angle:0-45 °
 Height:35mm/107mm



ALTRA-METAL PRO HGB

MATERIAL
 Main Structure: AL6005-T6
 Roof Hook: AL6005-T6
 Fasteners: SUS 304

OPTIONS
 Color: Silver / Black
 Panel Layout: Landscape/Portrait
 Tilt Angle:0 °



ALTRA-METAL PRO U

MATERIAL
 Rail: AL6005-T6
 Fasteners: SUS 304

OPTIONS
 Color: Silver / Black
 Panel Layout: Portrait
 Tilt Angle:0 °



ALTRA-METAL PRO H

MATERIAL
 Rail: AL6005-T6
 Fasteners: SUS 304

OPTIONS
 Color: Silver / Black
 Panel Layout: Portrait
 Tilt Angle:10 °



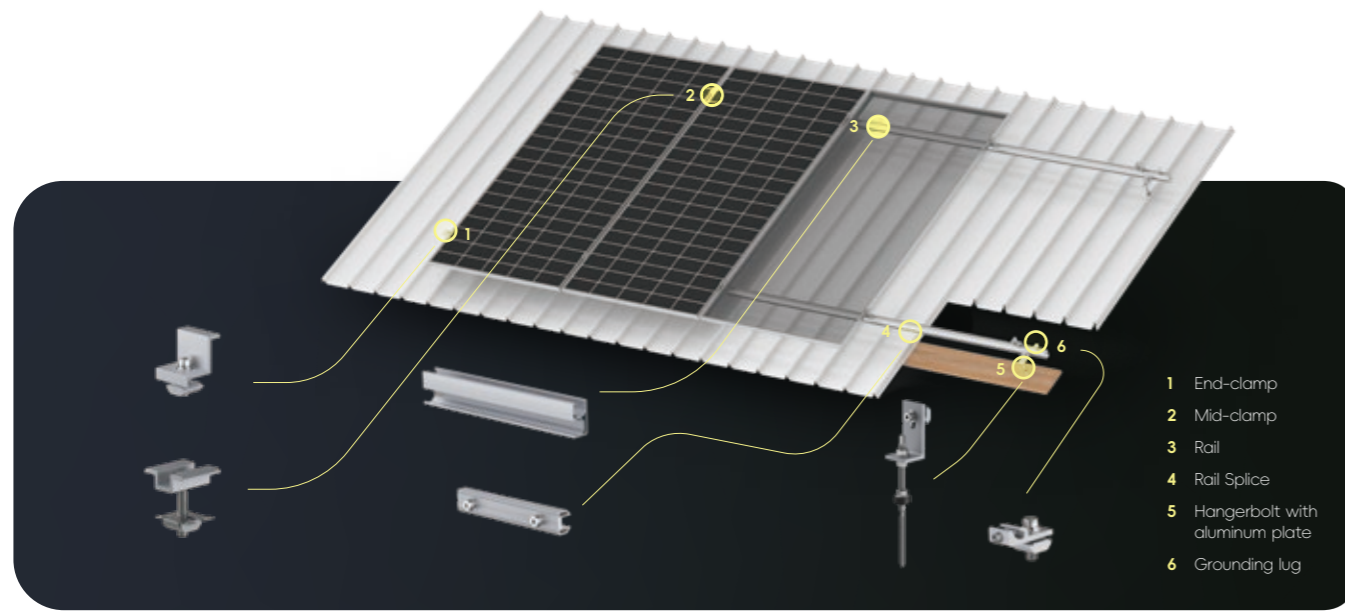
ALTRA-METAL CM

MATERIAL
 Rail: AL6005-T6
 Fasteners: SUS 304

OPTIONS
 Color: Silver / Black
 Panel Layout: Portrait
 Tilt Angle:20 °

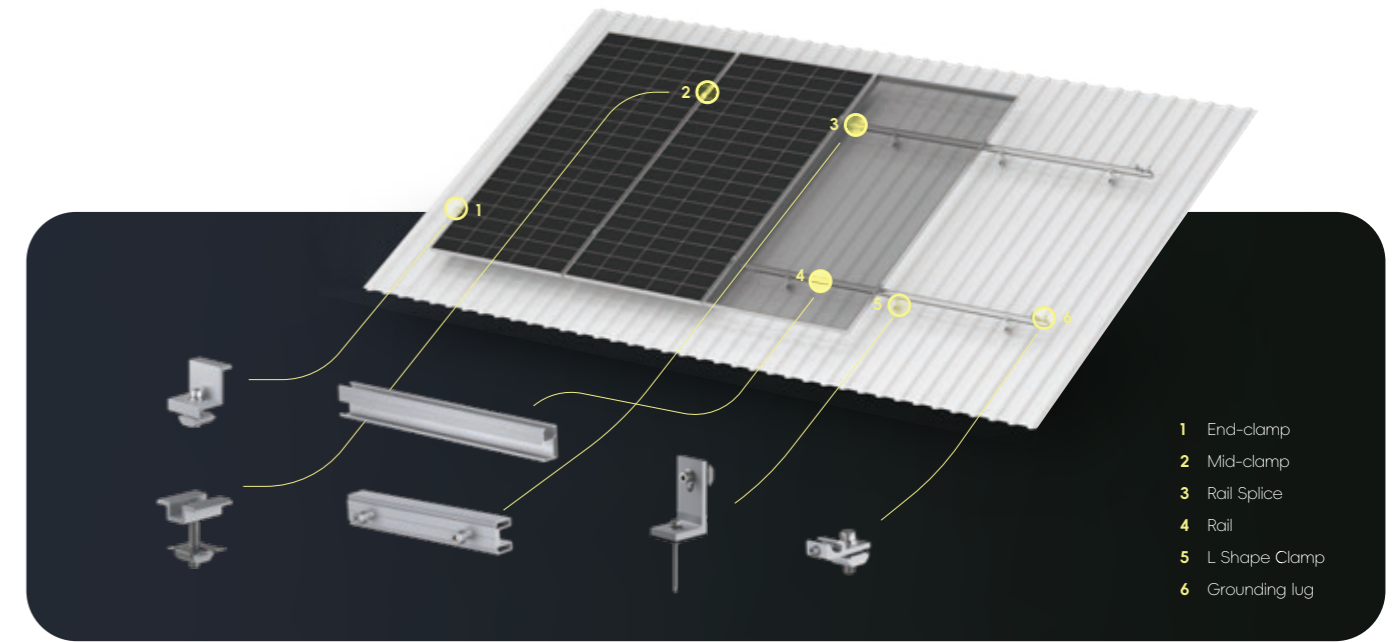


ALTRA-METAL **BASE**



- 1 End-clamp
- 2 Mid-clamp
- 3 Rail
- 4 Rail Splice
- 5 Hangerbolt with aluminum plate
- 6 Grounding lug

ALTRA-METAL **LITE**



- 1 End-clamp
- 2 Mid-clamp
- 3 Rail Splice
- 4 Rail
- 5 L Shape Clamp
- 6 Grounding lug

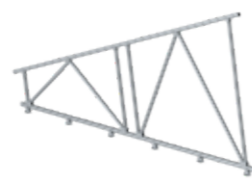
TRAPEZOIDAL METAL ROOF



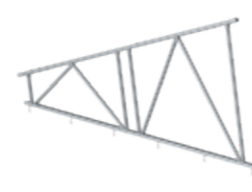
ALTRA-METAL BASE HGB



ALTRA-METAL BASE L



ALTRA-METAL BASE H1



ALTRA-METAL BASE H2

MATERIAL	Main Structure: Al6005-T6 Hanger Bolt: Sus 304 Fasteners: Sus 304	Main Structure: Al6005-T6 Roof Hook: Al6005-T6 Fasteners: Sus 304	Main Structure: Al6005-T6 Hanger Bolt: Sus 304 Fasteners: Sus 304	Main Structure: Al6005-T6 Hanger Bolt: Sus 304 Fasteners: Sus 304
OPTIONS	Color: Silver / Black Panel Layout: Landscape/Portrait Tilt Angle:0° Connection:Clamping Block	Color: Silver / Black Panel Layout: Portrait Tilt Angle:0°	Color: Silver / Black Panel Layout: Portrait Parallel/Vertical to The Flow Direction Tilt Angle:5° -30°	Color: Silver / Black Panel Layout: Portrait Parallel/Vertical to The Flow Direction Tilt Angle:5° -30°

TRAPEZOIDAL METAL ROOF



ALTRA-METAL LITE MINIRAIL H30



ALTRA-METAL LITE MINIRAIL H30W



ALTRA-METAL LITE HGB



ALTRA-METAL LITE L

MATERIAL	Rail: AL6005-T6 Fasteners: SUS 304	Rail: AL6005-T6 Fasteners: SUS 304	Main Structure: AL6005-T6 Hanger Bolt: SUS 304 Fasteners: SUS 304	Main Structure: AL6005-T6 Roof Hook: AL6005-T6 Fasteners: SUS 304
OPTIONS	Color: Silver / Black Panel Layout: Landscape Tilt Angle:0°	Color: Silver / Black Panel Layout: Portrait Tilt Angle:0°	Color: Silver / Black Panel Layout: Landscape/Portrait Tilt Angle:0° Connection:Clamping Block	Color: Silver / Black Panel Layout: Portrait Tilt Angle:0°

TRAPEZOIDAL METAL ROOF



ALTRA-METAL BASE H3



ALTRA-METAL BASE H4



ALTRA-METAL BASE KLOCK



ALTRA-METAL BASE ST

KLIPIKLOK METAL ROOF

STANDING SEAM METAL ROOF

MATERIAL	Main Structure: Al6005-T6 Hanger Bolt: Sus 304 Fasteners: Sus 304	Main Structure: Al6005-T6 Hanger Bolt: Sus 304 Fasteners: Sus 304	Main Structure: Al6005-T6 Roof Hook: Al6005-T6 Fasteners: Sus 304	Main Structure: Al6005-T6 Roof Hook: Al6005-T6 Fasteners: Sus 304
OPTIONS	Color: Silver / Black Panel Layout: Portrait Parallel/Vertical to The Flow Direction Tilt Angle:5° -30°	Color: Silver / Black Panel Layout: Portrait Parallel/Vertical to The Flow Direction Tilt Angle:5° -30°	Color: Silver / Black Panel Layout: Portrait Tilt Angle:0°	Color: Silver / Black Panel Layout: Portrait Tilt Angle:0°

TRAPEZOIDAL METAL ROOF

KLIPIKLOK METAL ROOF

STANDINGSEAM METAL ROOF



ALTRA-METAL LITE RL



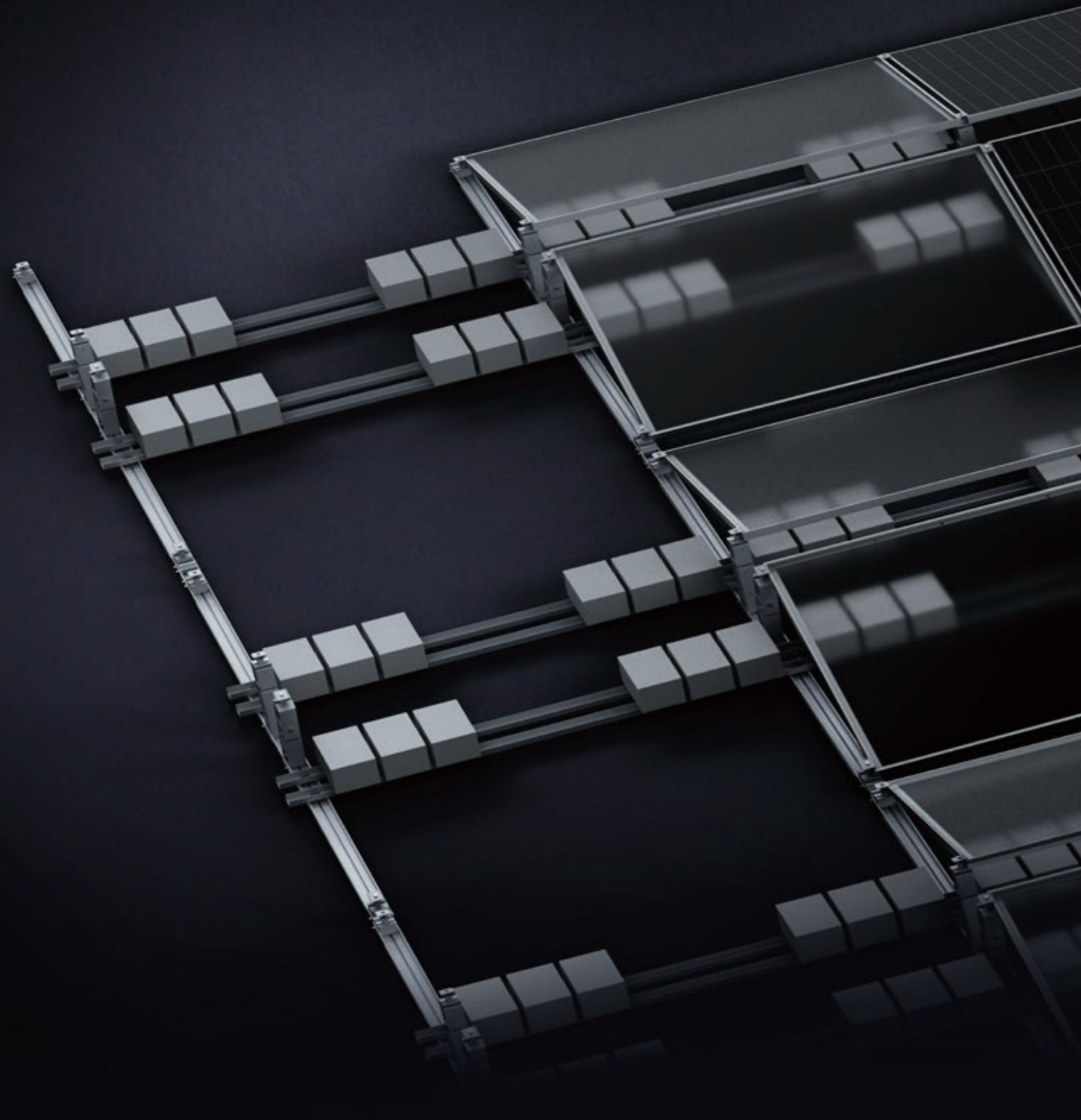
ALTRA-METAL LITE KLOCK



ALTRA-METAL LITE ST

MATERIAL	Rail: AL6005-T6 Fasteners: SUS 304	Main Structure: AL6005-T6 Roof Hook: AL6005-T6 Fasteners: SUS 304	Main Structure: AL6005-T6 Roof Hook: AL6005-T6 Fasteners: SUS 304
OPTIONS	Color: Silver / Black Panel Layout: Portrait Tilt Angle:0°	Color: Silver / Black Panel Layout: Portrait Tilt Angle:0°	Color: Silver / Black Panel Layout: Portrait Tilt Angle:0°

Altra FLAT ROOF



BALLAST

TRIANGLE

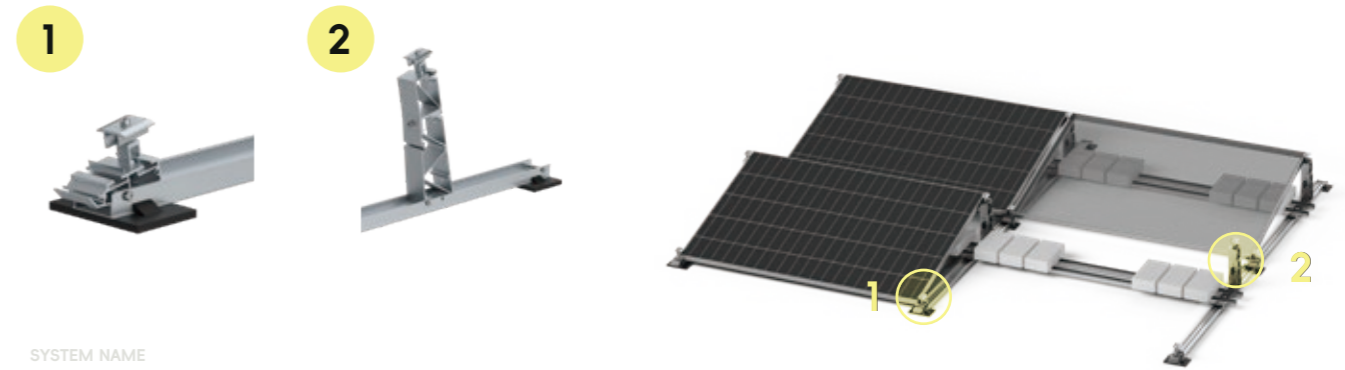
ADJUSTABLE TILT

TPO

V-FLEX

BALLAST

PORTABLE BALLAST



SYSTEM NAME
ALTRA-FLAT PB II

MATERIAL
Main Structure: AL6005-T6
Fasteners: SUS 304

APPLICATION
Orientation:North/South, East-West
Clamping:Long side or Short Side
Layout:Landscape

TILT ANGLE
10° / 15°

- FEATURES**
- **Versatile**
Fits standard modules; 10° /15° tilt option; E-W or N-S orientation; Clamps on long or short side
 - **Quick Install**
Pre-assembled; Slide-in connection; One fastener size - no tool change
 - **Add-on option**
Wind defectors; Microinverters base; Cable clips

LONG-SIDE BALLAST



SYSTEM NAME
ALTRA-FLAT LS

MATERIAL
Main Structure: AL6005-T6
Fasteners: SUS 304

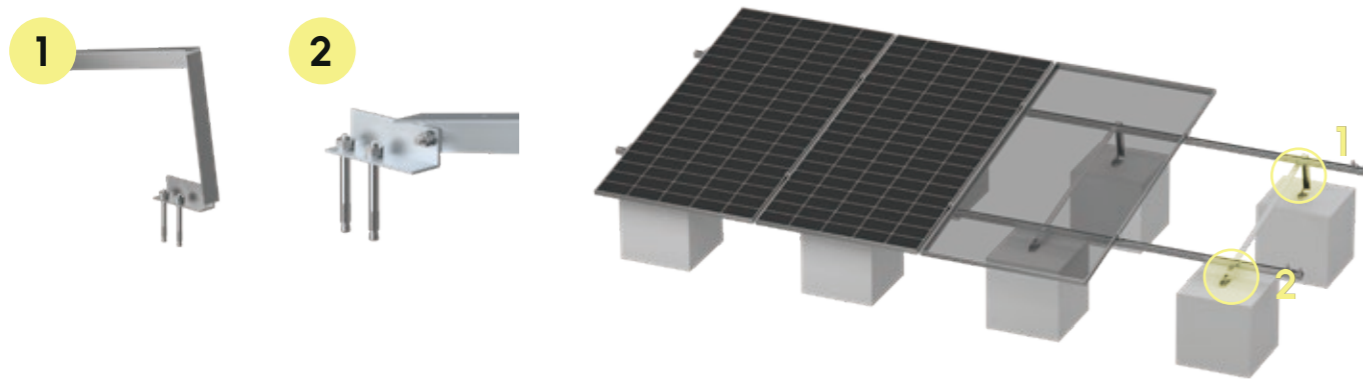
APPLICATION
Orientation:North/South, East-West
Clamping:Long side or Short Side
Layout:Landscape

TILT ANGLE
10° / 15°

- FEATURES**
- **Non-Penetrating Mounting**
Ensures 100% roof integrity and water-tightness through a zero-penetration ballast design.
 - **High Installation Efficiency**
Minimizes on-site labor with highly pre-assembled components and one tool installation.
 - **Large Module Support**
Engineered with extended structural spans to securely accommodate high-power and large-scale panels.

TRIANGLE

AL TRIANGLE



SYSTEM NAME
ALTRA-FLAT AT

MATERIAL
Main Structure: AL6005-T6
Fasteners: SUS 304

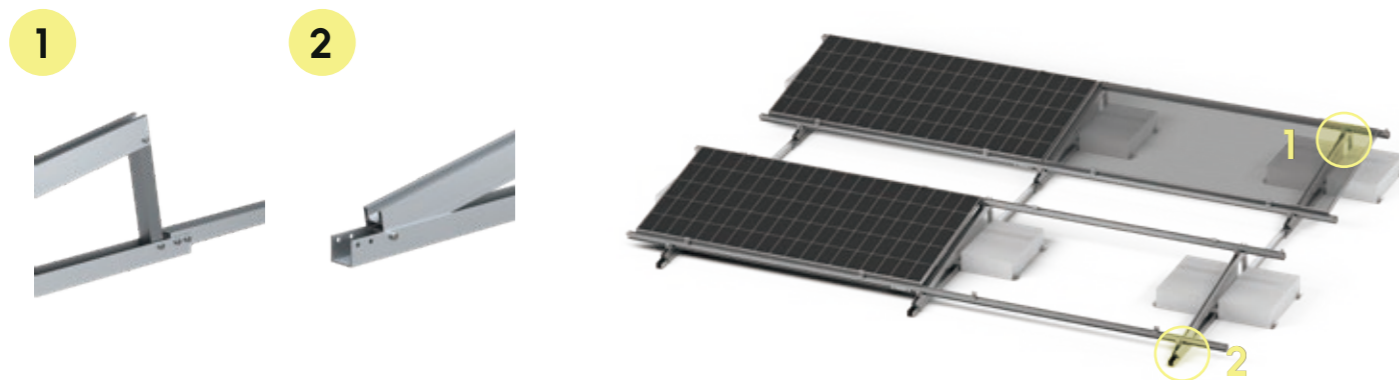
APPLICATION
Orientation:North/South
Clamping:Long side
Layout:Portrait

TILT ANGLE
0° — 15°

FEATURES

- Maximum Pre-assembly**
Minimizes on-site installation steps and labor costs with high pre-assembly components.
- Superior Cost-Performance**
Delivers a high-quality, durable mounting solution at a competitive price point for optimal project value.
- Versatile Roof Compatibility**
Features a flexible design suitable for seamless installation on both flat roofs and various metal roof profiles.

TUBE TRIANGLE



SYSTEM NAME
ALTRA-FLAT TT

MATERIAL
Main Structure: AL6005-T6
Fasteners: SUS 304

APPLICATION
Orientation:North/South, East-West
Clamping:Long side or Short Side
Layout:Landscape

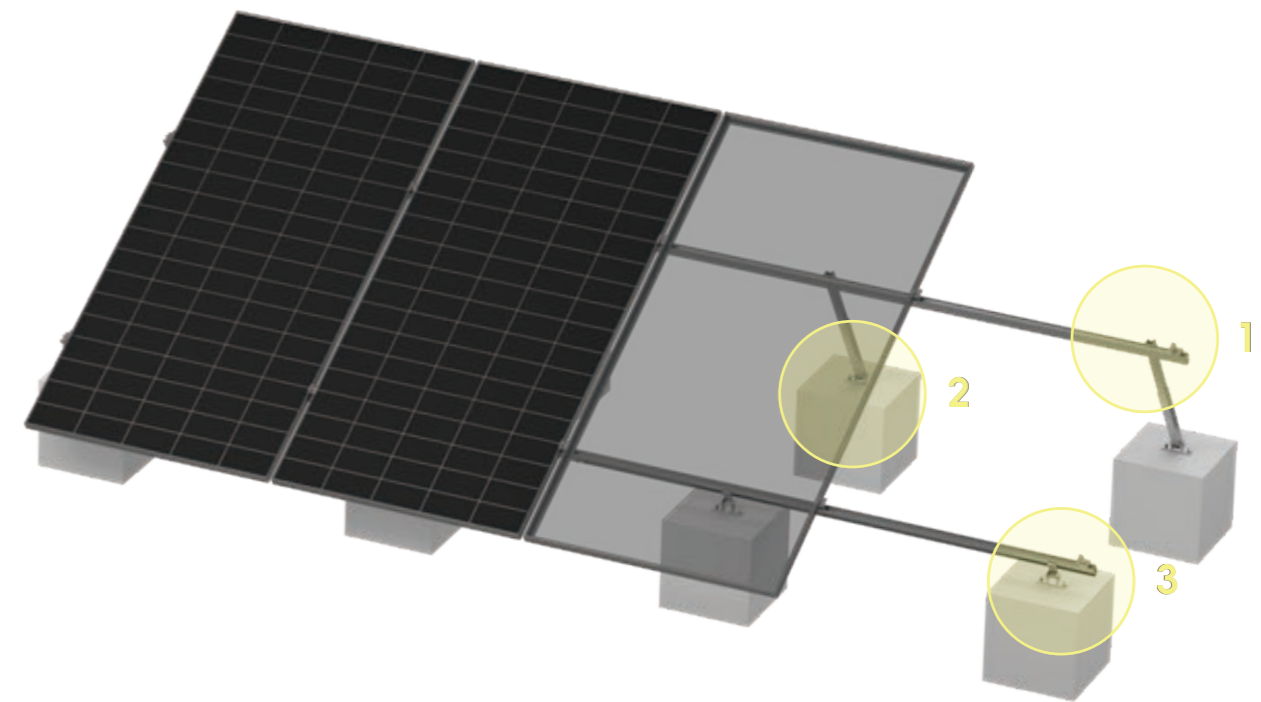
TILT ANGLE
10°

FEATURES

- Maximum Pre-assembly**
High pre-assembly components minimize on-site installation steps and reduce overall labor costs.
- Infinite Module Compatibility**
The flexible design accommodates solar modules of all dimensions.
- High-Strength Square Tube**
Engineered with a robust square tube structure to provide superior mechanical load resistance and long-term stability.

ADJUSTABLE TILT

ALTRA-FLAT AF



SYSTEM NAME
ALTRA-FLAT AF

MATERIAL
Main Structure: AL6005-T6
Fasteners: SUS 304

APPLICATION
Orientation:North/South
Clamping:Long side
Layout:Landscape/Portrait

TILT ANGLE
5° — 25°

FEATURES

- Flexible Tilt Adjustment**
Allows for various angles to maximize annual energy yield.
- Maximum Pre-assembly**
Minimizes on-site installation steps and labor costs with highly pre-assembled components.

TPO

ALTRA-FLAT TPO



SYSTEM NAME
ALTRA-FLAT TPO

MATERIAL
Main Structure: AL6005-T6
Fasteners: SUS 304

APPLICATION
Orientation:North/South, East-West;
Clamping:Long side or Short Side
Layout:Landscape

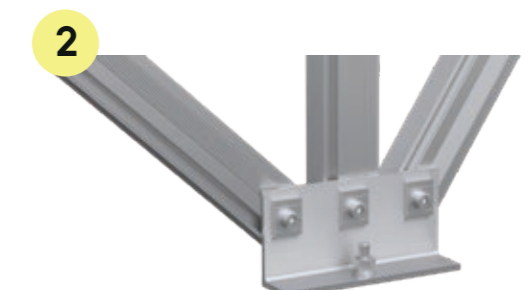
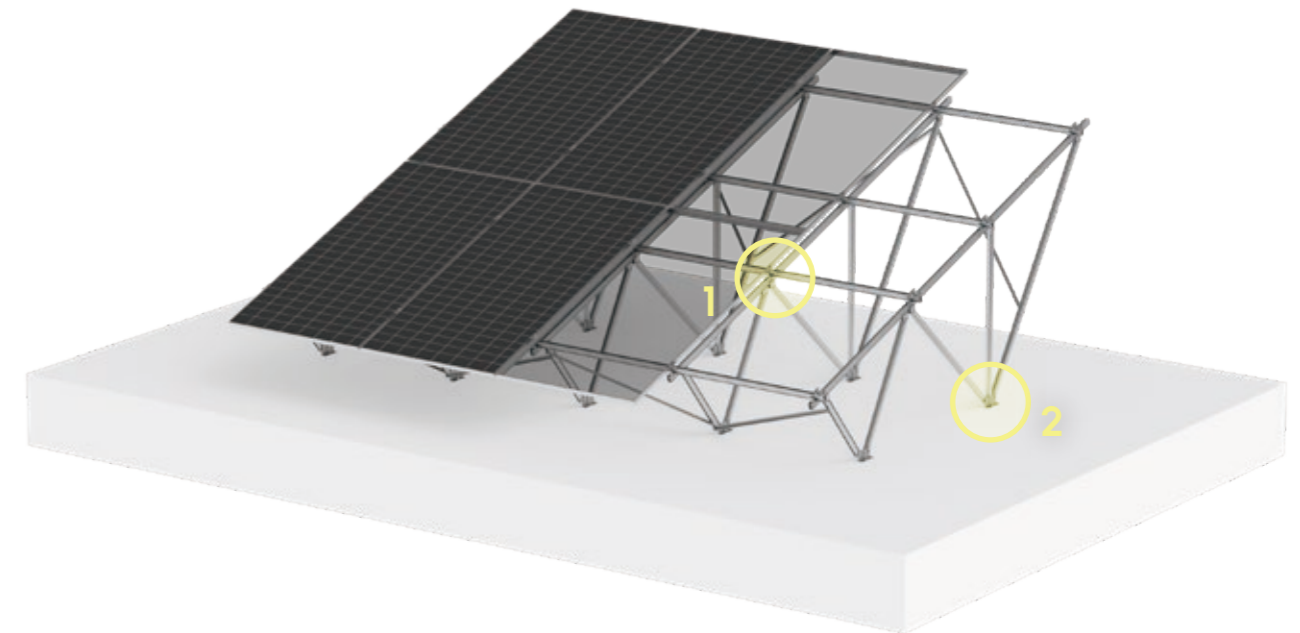
TILT ANGLE
0° – 45°

FEATURES

- Seamless TPO Integration**
Ensures absolute roof water-tightness and integrity through specialized TPO membrane support seals.
- Advanced Dual-Rail Structure**
Features a double-rail design to enable significantly larger spans and superior structural stability with fewer mounting points.
- Optimized Installation**
Minimizes on-site labor time and overall project costs with highly pre-assembled components.

V-FLEX

ALTRA-FLAT V-FLEX



SYSTEM NAME
ALTRA-FLAT V-FLEX

MATERIAL
Main Structure: AL6005-T6
Fasteners: SUS 304

APPLICATION
Orientation:North/South, East-West;
Clamping:Long side or Short Side
Layout:Landscape

TILT ANGLE
20°

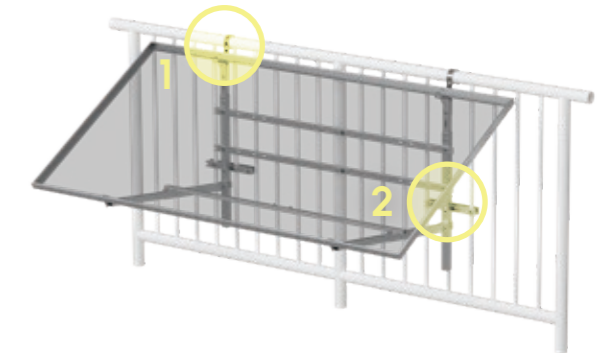
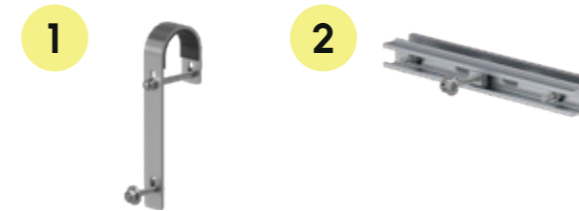
FEATURES

- Maximum Pre-assembly**
Minimizes on-site installation steps and labor costs with high pre-assembly components.
- Superior Cost-Performance**
Delivers a high-quality, durable mounting solution at a competitive price point for optimal project value.
- Versatile Roof Compatibility**
Features a flexible design suitable for seamless installation on both flat roofs and various metal roof profiles.

Altra BALCONY

BALCONY

ALTRA-BALC II



SYSTEM NAME
ALTRA-BALC II

MATERIAL

Main Structure: AL6005-T6
Fasteners: SUS 304

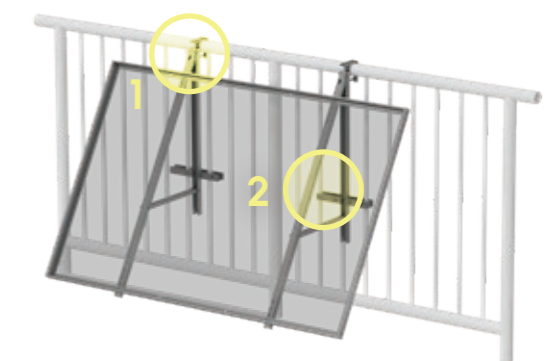
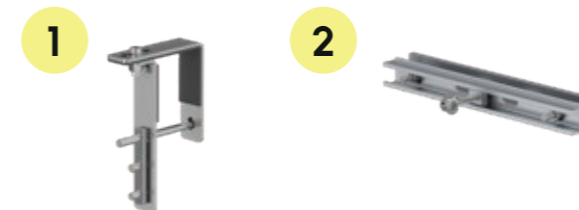
TILT ANGLE

Up to 60°

FEATURES

- Multi-Scenario Versatility**
 The adaptable structure allows for seamless integration across various balcony types and diverse residential architectures.
- Maximum Pre-assembly**
 Minimizes on-site installation steps and labor time with factory-integrated components.
- Effortless Disassembly**
 Allows for rapid removal and reuse without structural damage through a user-friendly modular design.

ALTRA-BALC III



SYSTEM NAME
ALTRA-BALC III

MATERIAL

Main Structure: AL6005-T6
Fasteners: SUS 304

TILT ANGLE

0° / 15° / 21° / 29° / 30°

FEATURES

- Maximum Pre-assembly**
 Minimizes on-site installation steps and labor time with factory-integrated components.
- Effortless Disassembly**
 Allows for rapid removal and reuse without structural damage through a user-friendly modular design.
- Superior Cost-Performance**
 Delivers high-quality structural reliability and durability at a highly competitive market price.

Altima

GROUND



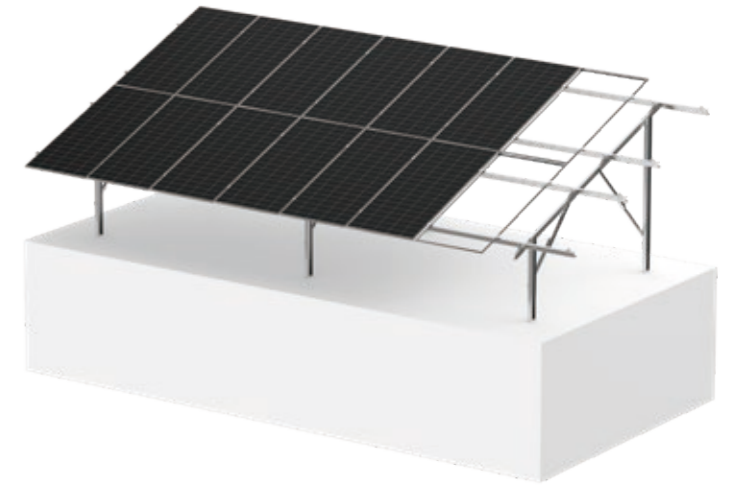
ALTIMA-GROUND ST

ALTIMA-GROUND AL

STEEL

FEATURES

- Economic And Reliable**
 Designed for large-size solar farms.
- Tailored Design**
 Different designs to meet high loads caused by local wind and snow conditions
- Optional Foundation**
 Steel Pile, ground screw, and concrete block foundations are optional.



SYSTEM NAME
ALTIMA-GROUND ST RAM

FOUNDATION Raming Pile	STANDARDS ASCE,EN,GB,JIS,AZ
MATERIAL STEEL AL6005 SUS304	ADAPTED AGNLE EAST-WEST -30° — 30°
PANEL LAYOUT Vertical/Landscape	SOUTH-NORTH -30° — 30°



SYSTEM NAME
ALTIMA-GROUND ST CON

FOUNDATION Concrete	STANDARDS ASCE,EN,GB,JIS,AZ
MATERIAL STEEL AL6005 SUS304	ADAPTED AGNLE EAST-WEST 0°
PANEL LAYOUT Vertical/Landscape	SOUTH-NORTH 0°



SYSTEM NAME
ALTIMA-GROUND ST PHC

FOUNDATION PHC	STANDARDS ASCE,EN,GB,JIS,AZ
MATERIAL STEEL AL6005 SUS304	ADAPTED AGNLE EAST-WEST -10° — 10°
PANEL LAYOUT Vertical/Landscape	SOUTH-NORTH -10° — 10°



SYSTEM NAME
ALTIMA-GROUND ST SCR

FOUNDATION Screwing Pile	STANDARDS ASCE,EN,GB,JIS,AZ
MATERIAL STEEL AL6005 SUS304	ADAPTED AGNLE EAST-WEST -30° — 30°
PANEL LAYOUT Vertical/Landscape	SOUTH-NORTH -30° — 30°



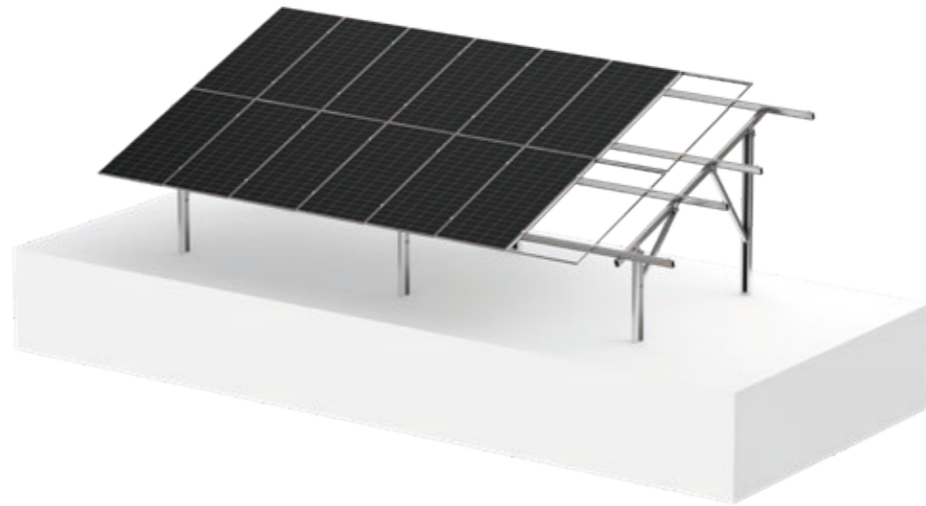
SYSTEM NAME
ALTIMA-GROUND ST RCF

FOUNDATION Reinforcing Cage Fabrication	STANDARDS ASCE,EN,GB,JIS,AZ
MATERIAL STEEL AL6005 SUS304	ADAPTED AGNLE EAST-WEST -30° — 30°
PANEL LAYOUT Vertical/Landscape	SOUTH-NORTH -30° — 30°

ALUMINIUM

FEATURES

- **Lightweight**
Easy transport and installation.
- **Highly Pre-Assembled**
For faster installation and lower labor costs.
- **Highly Corrosion Resistant**
- **Sleek Appearance**



SYSTEM NAME
ALTIMA-GROUND AL RAM

FOUNDATION Raming Pile	STANDARDS ASCE, GB, JIS, EN
MATERIAL Aluminum Stainless Steel Steel	ADAPTED AGNLE EAST-WEST -45° — 45° SOUTH-NORTH 0° — 50°
PANEL LAYOUT Vertical/Landscape	



SYSTEM NAME
ALTIMA-GROUND AL CON

FOUNDATION Concrete	STANDARDS ASCE, GB, JIS, EN
MATERIAL Aluminum Stainless Steel Steel	ADAPTED AGNLE EAST-WEST -45° — 45° SOUTH-NORTH 0° — 50°
PANEL LAYOUT Vertical/Landscape	

SYSTEM NAME
ALTIMA-GROUND AL SCR

FOUNDATION Screwing Pile	STANDARDS ASCE, GB, JIS, EN
MATERIAL Aluminum Stainless Steel Steel	ADAPTED AGNLE EAST-WEST -45° — 45° SOUTH-NORTH 0° — 50°
PANEL LAYOUT Vertical/Landscape	



Alima CARPORT

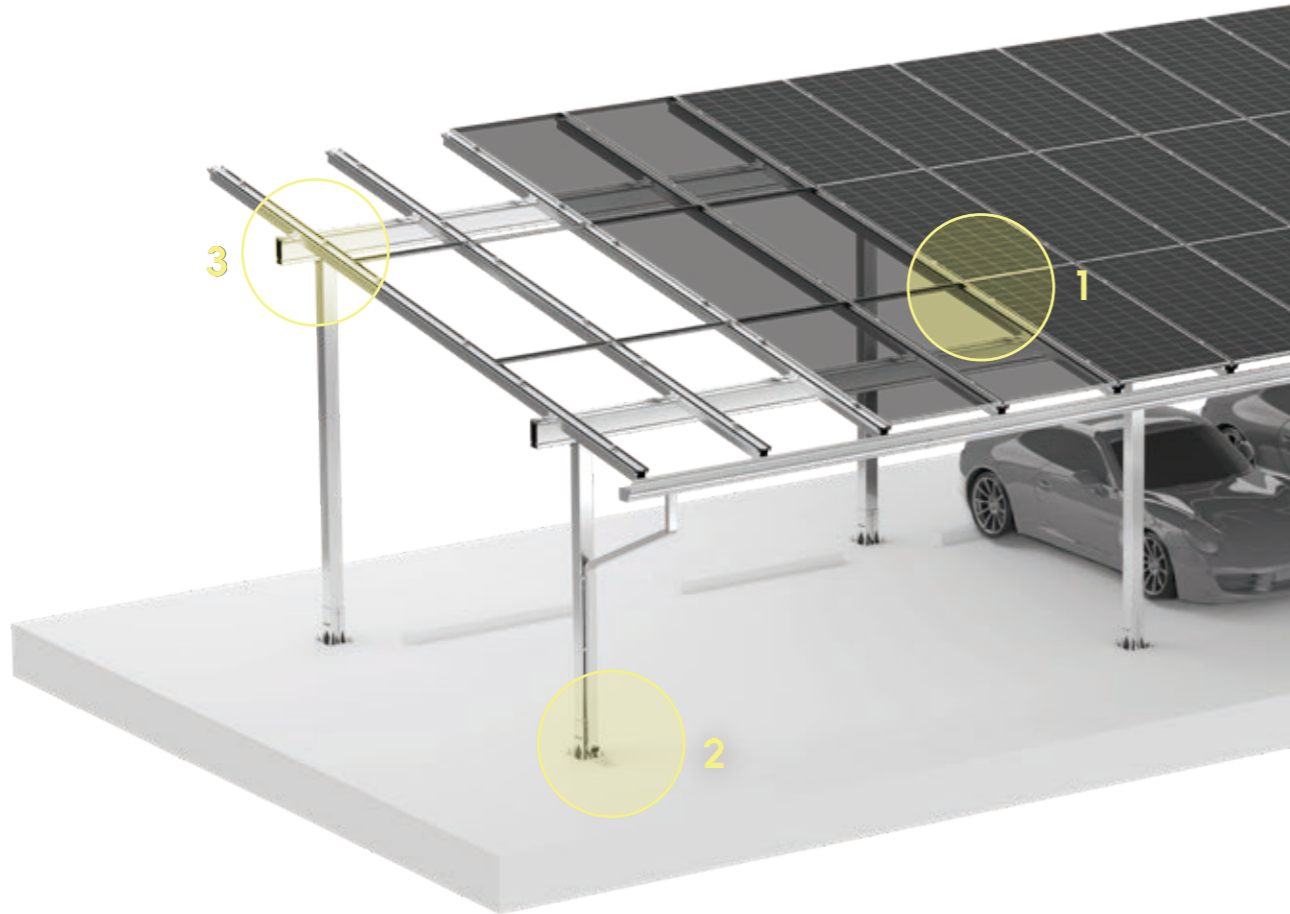


ALTIMA-CARPORT AL

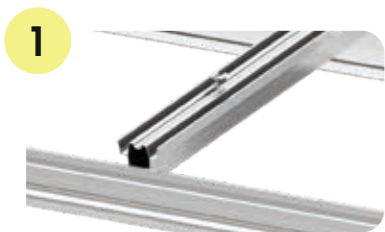
ALUMINIUM

FEATURES

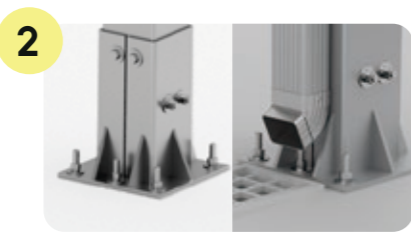
- **Lightweight**
Easy transportation and installation.
- **Pre-assembled**
For faster installation and lower labor costs.
- **Highly Corrosion Resistant**
- **Sleek Appearance**



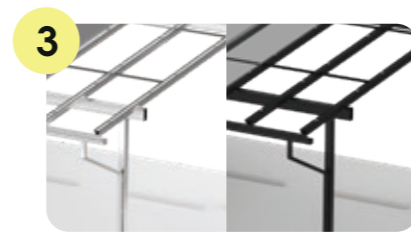
OPTIONS



WATERPROOF OPTIONAL



DOWNSPOUT OPTIONAL



BLACK COLOR OPTIONAL



ALTIMA-CARPORT AL Y

MATERIAL

Aluminum
 Stainless Steel
 Steel

STANDARDS

ASCE, GB, JIS, EN

OPTIONS

Silver/Black
 Waterproof Optional
 Downspout Optional

ADAPTED AGNLE

SOUTH-NORTH: 0° ~50°



ALTIMA-CARPORT AL V

MATERIAL

Aluminum
 Stainless Steel
 Steel

STANDARDS

ASCE, GB, JIS, EN

OPTIONS

Silver/Black
 Waterproof Optional
 Downspout Optional

ADAPTED AGNLE

SOUTH-NORTH: 0° ~50°



ALTIMA-CARPORT AL Π

MATERIAL

Aluminum
 Stainless Steel
 Steel

STANDARDS

ASCE, GB, JIS, EN

OPTIONS

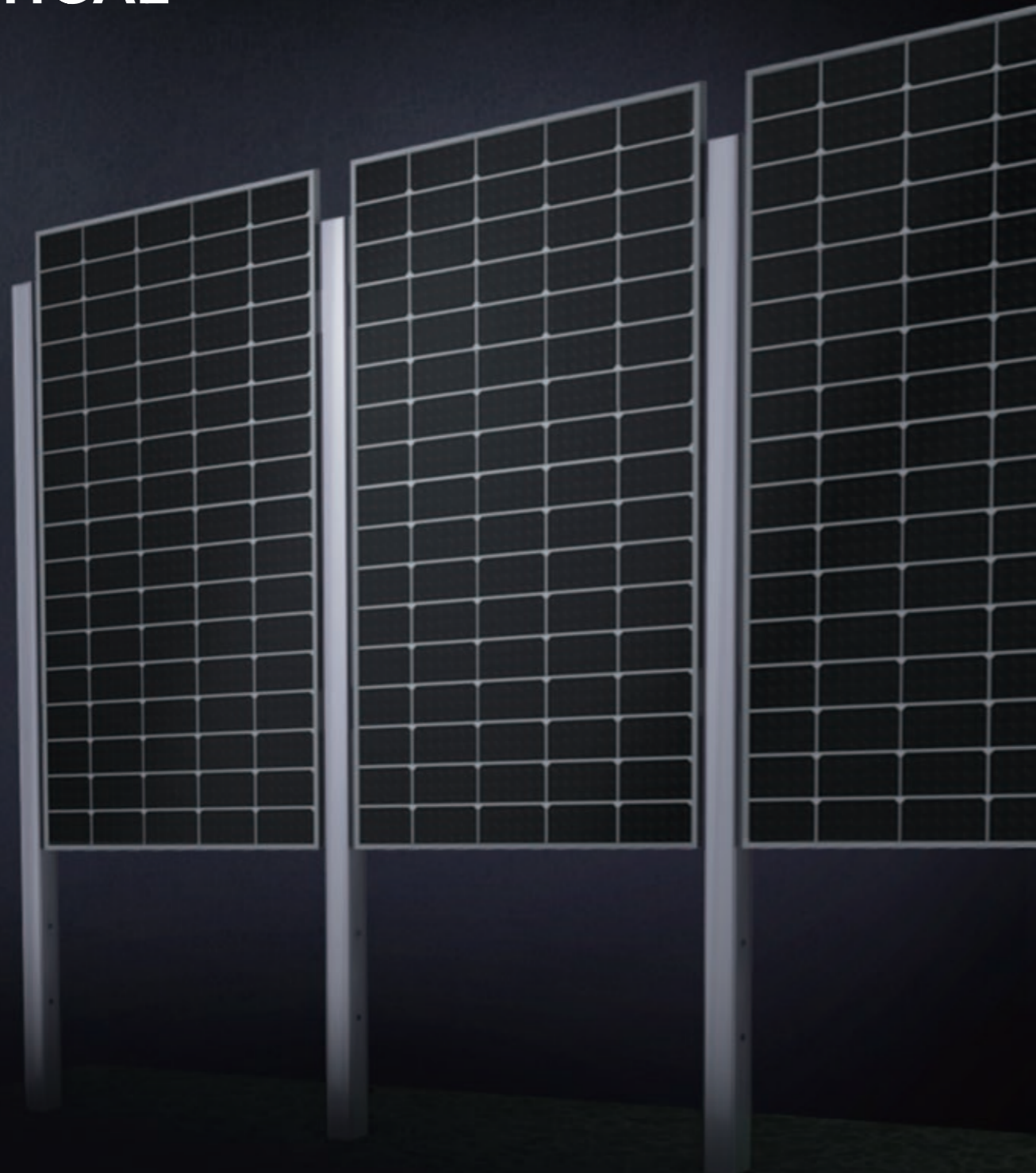
Silver/Black
 Waterproof Optional
 Downspout Optional

ADAPTED AGNLE

SOUTH-NORTH: 5° /10°

Altima

VERTICAL

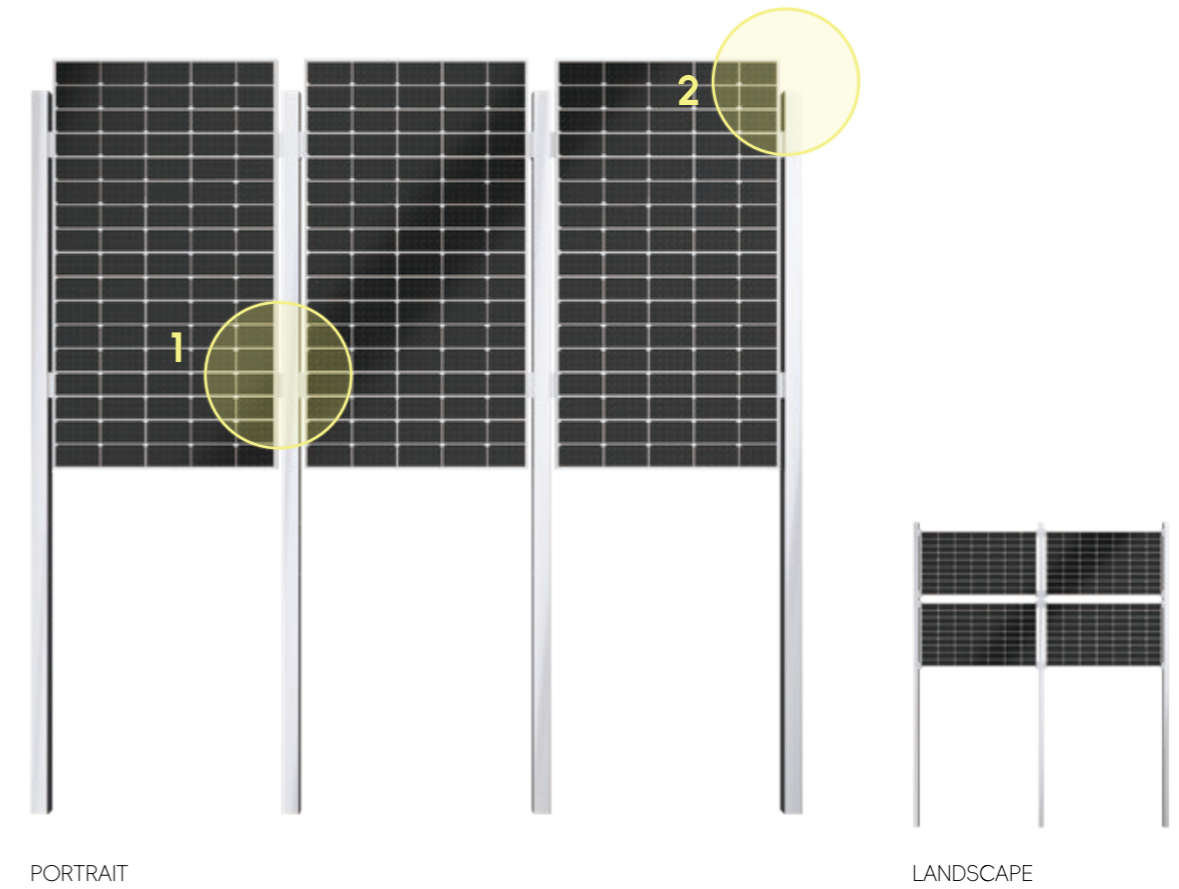


PORTRAIT

LANDSCAPE

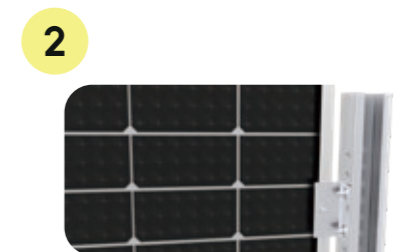
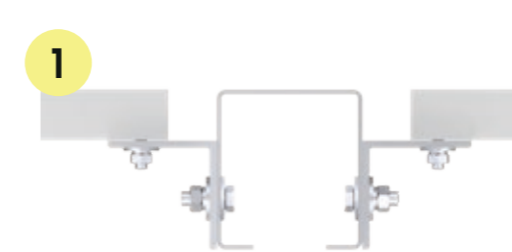
ALTIMA-VERTICAL

FEATURE



PORTRAIT

LANDSCAPE



SYSTEM NAME
ALTIMA-VERTICAL P/ALTIMA-VERTICAL L

MATERIAL
SUS304

STANDARDS
Eurocode, NEN, BSEN

ADAPTED ANGLE
10°

FEATURES

- Stable Vertical Structure**
 different cross sections be designed to ensure the zstability of the structure according to the snow load conditions at different locations
- Quick Installation**
 optimize the connection of each part, simplify the installation, and save installing time.
- Optional Foundation**
 Ground screw or concrete block foundation are optional.

Altima

AGRI

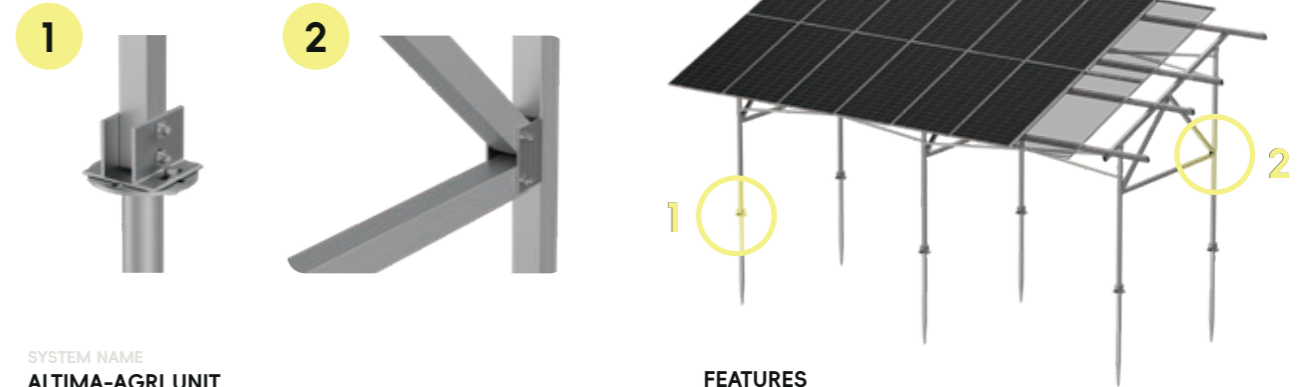


UNIT

MATRIX

UNIT

ALTIMA-AGRI UNIT



SYSTEM NAME
ALTIMA-AGRI UNIT

MATERIAL

Aluminum
Stainless Steel
Steel

STANDARDS

ASCE, GB, JIS, EN

ADAPTED AGNLE

EAST-WEST: -45° ~45°
SOUTH-NORTH: 0° ~50°

LAYOUT

Vertical/Landscape

FEATURES

- **Double Land Use**
Combination of renewable energy and agriculture.
- **Decrease Pollution For Soil**
Aluminum material & ground screw foundation.
- **Long-Term Use Guarantee**
- **Unique Al6005-T6, Better Strength**
- **Experienced Team**
Technical team with on-site experience, able to propose suitable solution.

MATRIX

ALTIMA-AGRI MATRIX



SYSTEM NAME
ALTIMA-AGRI MATRIX

MATERIAL

Aluminum
Stainless Steel
Steel

STANDARDS

ASCE, GB, JIS, EN

ADAPTED AGNLE

EAST-WEST: -45° ~45°
SOUTH-NORTH: 0° ~50°

LAYOUT

Vertical/Landscape

FEATURES

- **Double Land Use**
Combination of renewable energy and agriculture.
- **Decrease Pollution For Soil**
Aluminum material & ground screw foundation.
- **Long-Term Use Guarantee**
- **Unique Al6005-T6, Better Strength**
- **Experienced Team**
Technical team with on-site experience, able to propose suitable solution.